

2021 Registration

creating futures



WeAreCPUT

-  www.cput.ac.za
-  +27 21 959 6767
-  info@cput.ac.za
-  @CPUT
-  @wearecput
-  www.facebook.com/cput.ac.za

Every effort has been made to ensure the accuracy of the information in this handbook, however, the University reserves the right at any time, if circumstances require, to make changes to any of the published details.

Contents

- 2** **IMPORTANT INFORMATION**
 - Academic registration time frames
 - First-year students
 - Returning students
 - Online assistance/ General enquiries
 - Change of address
 - Term dates 2021
 - First-year welcoming
 - Timetables
 - Orientation dates 2021
 - Inclusive education and disability support services

- 6** **THE ACADEMIC REGISTRATION PROCESS**
 - Final acceptance
 - Registration restrictions
 - Financial clearance
 - Academic exclusions
 - International clearance
 - Off-campus and academic online registration
 - Student card
 - Residence registration

- 11** **FINANCIAL MATTERS/ CLEARANCE**
 - Off-campus financial clearance process
 - Tuition fees and off-campus payments
 - Terms of payment: Tuition fees
 - Off-campus payments
 - Sponsorship

- 13** **FINANCIAL AID**
 - What is financial aid?
 - Types of financial aid
 - What to do if you need financial assistance
 - Contact details

- 16** **INTERNATIONAL MATTERS AND CLEARANCE**
 - Academic registration procedure: International students
 - Contact details
 - Money matters
 - Medical aid cover
 - Medical aid cover payment options

- 20** **ACADEMIC PRE-REGISTRATION CHECKLIST**
 - Academic registration guide

- 24** **8-STEP ONLINE ACADEMIC REGISTRATION GUIDE**
 - Academic registration guide

- 30** **HOW TO ADD OR CANCEL SUBJECTS, OR CANCEL A QUALIFICATION AFTER REGISTRATION**

- 32** **OFF-CAMPUS MANUAL ACADEMIC REGISTRATION PROCESS**

- 33** **RESIDENCE REGISTRATIONS**
 - The 5-step online residence registration guide

- 36** **ACADEMIC REGISTRATION DATES**

- 92** **CAMPUS MAPS**

Important information

Academic registration time frames

In order to ensure compliance with COVID-19 protocols for Higher Education institutions, only off-campus registrations will be possible.

CPUT's COVID-19 contingency plans may be accessed using the following link:
<https://www.cput.ac.za/about/covid-19>

Undergraduate Registration (Including BTech/ Advanced Diploma programmes)

First-year students

Off-campus and online registration is scheduled from 1–12 March 2021.

First-year students who have been fully accepted and are not awaiting final acceptance based on the recent 2020 NSC results may proceed with the registrations as early as 1 March 2021.

First-year students with provisional acceptance based on the final 2020 NSC results:

- Faculties will conduct final acceptance based on the final 2020 NSC results from Monday, 1 March to Friday, 5 March 2021.
- Successful students will receive an automated sms indicating their final acceptance.

Please register immediately as spaces in programmes fill up quickly.

Returning students

Off-campus and online registrations vary from faculty to faculty. Some programmes have been identified to commence with off-campus registrations (but with no assistance) from as early as Monday, 11 January 2021.

Registration time frames may vary. Please refer to the detailed registration schedule for the commencement and end date for registrations (from page 36).

Postgraduate Registration (MTech/ Master's/ MEd & DTech/ Doctoral/ DEEd programmes)

Closing dates:

Returning students (Full Research M and D programmes)	31 March 2021
MTech/ Masters (Course-based programmes)	31 March 2021
First-time registering students (Full Research M and D programmes)	31 May 2021

Also note that an online registration support document is available for students that will help you deal with possible problems. This document is available at <http://www.cput.ac.za/sos> under the heading, "Registration".

Online assistance/ General enquiries

Online assistance capacity has been increased for online registrations. Students who require off-campus assistance can contact the Call Centre or visit the following link for detailed contact information: <https://www.cput.ac.za/enquiries>

CALL CENTRE (GENERAL ENQUIRIES):

For all queries related to admission status verification; how to access the online registration facility; registration dates; problems accessing the online registration link; etc., please call: **086 123 2788 / 021 959 6767**

Change of address

It is your responsibility to update your contact details, and most importantly, your cellphone number at all times. Please update the information online through the SOS system at <http://www.cput.ac.za/SOS>. If there are details that you cannot change (e.g. surname), then submit your request with a copy of your Identification Document to admissions@cput.ac.za

Term dates 2021

Term 1: 1 February – 31 March 2021 **Term 2:** 12 April – 25 June 2021
Term 3: 19 July – 3 September 2021 **Term 4:** 13 September – 15 December 2021

Faculty-specific term dates will be communicated to students.

First-year welcoming

The Vice-Chancellor of the Cape Peninsula University of Technology will address all registering first-year students.

Due to the current COVID-19 pandemic, the first-year welcoming will take the form of a virtual welcoming session. Further information will be displayed on the CPUT website closer to first-year registration timelines.

Timetables

Lecture timetables and other relevant documents will be obtainable from the academic departments. Consult these documents for information about start dates, times and venues.

Orientation dates 2021

Information regarding orientation will be communicated through the CPUT Orientation website: <https://www.cput.ac.za/students/about/orientation>

Inclusive education and disability support services (CPUT Disability Unit)

Disability Unit's vision:

To empower and support students with disabilities to reach their full potential in an inclusive academic environment that is respectful of human rights and treats all students with worth and dignity.

Our services – we provide:

- Support to students with disabilities
- Support to lecturers working with students with disabilities
- Language capturer for students who are Deaf or Hearing Impaired
- Group or one-on-one training on specialised software programs and/or assistive devices
- Assessments of students with disabilities' needs on all campuses
- Applications and recommendations for reasonable accommodation and exam concessions for students with disabilities.
- Inputs into policy development
- Outreach and marketing

- Research and Advocacy services
- Academic assistance during assessments
- Awareness raising and sharing of best practices
- Resource Centre and labs with short-term loan devices, specialised devices and software

We are pleased to offer a number of different assistive devices to students with disabilities to support them in their academic development:

- Large screen computer monitors – for students with visual impairment
- Scanners – to enable students to scan and save their work in document or audio format
- Magnifiers – for students with visual impairment
- Braille embosser – for blind students in order to convert documents into Braille
- Special large font keyboards – for students with visual impairment (in yellow and black, or black and white keyboards, ensuring high contrast)
- Digital recorders – for students with physical challenges and learning disabilities to enable them to record lectures and write notes at a later stage and at their own pace

Additional services during COVID 19:

- Online tutorial support and workshops with students with disabilities.
- Online support to lecturers working with students with disabilities.
- Online outreach services to the community, prospective students and parents.
- Production and sharing of informative videos online.
- Online disability awareness sessions, workshops and webinars.

All first-year students with specialised academic requirements, i.e. extra time, or using a scribe, etc., must please contact the Disability Unit for assistance upon registration. This also applies to returning students with disabilities who have not approached the Disability Unit when they applied to study.

The team at the Disability Unit looks forward to assisting you to make your academic life easier right from the start of your studies.

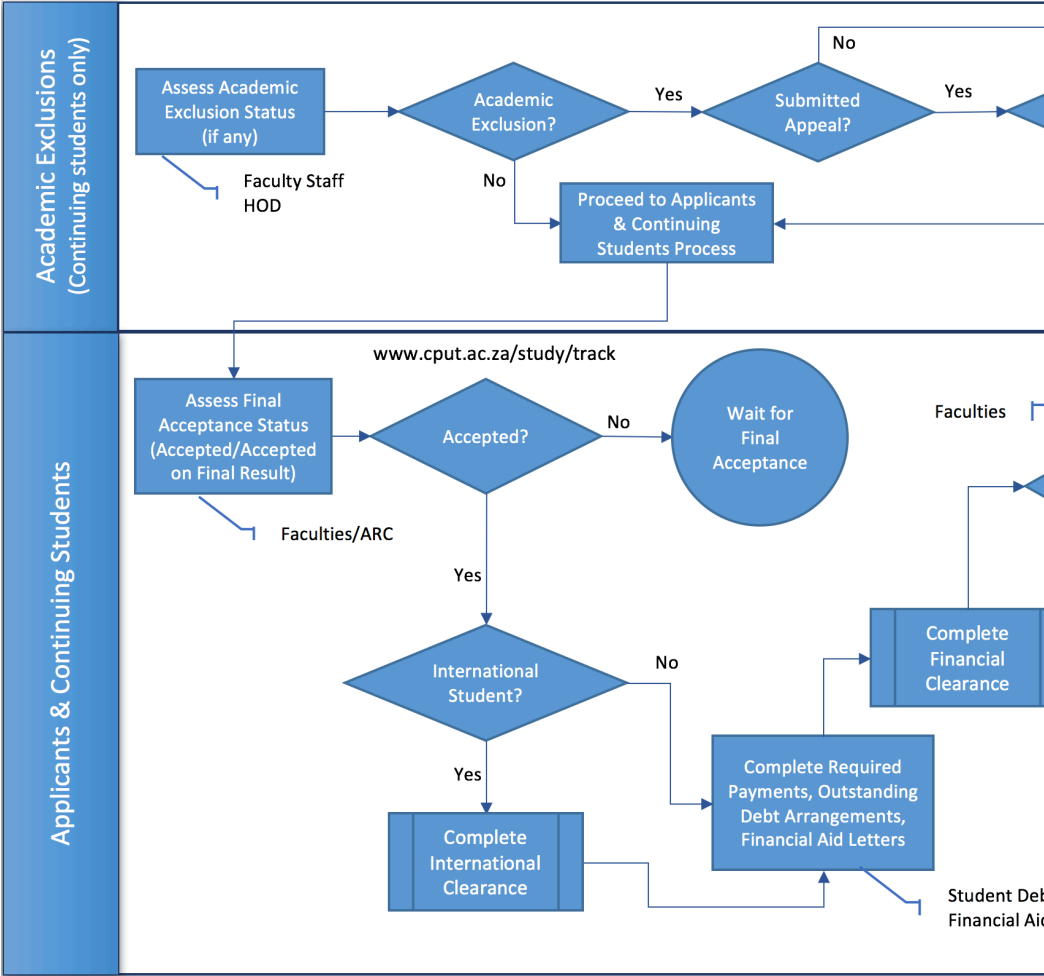
Returning students who have not previously approached the Unit and are struggling with their workload are also welcome to consult the team regarding their requirements and needs.

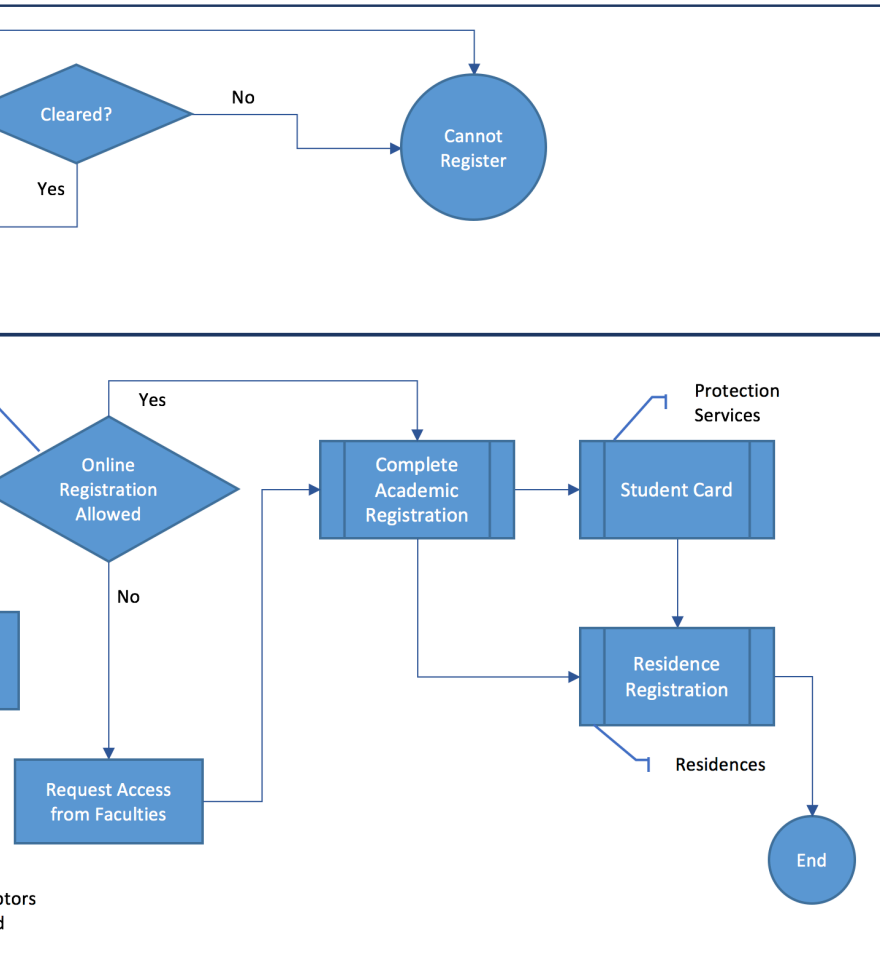
Students who require off-campus assistance can contact the Call Centre or visit the following link for detailed contact information: <https://www.cput.ac.za/enquiries>

Website: <https://www.cput.ac.za/services/disability/prospective>

Facebook: <https://www.facebook.com/CPUTDisabilityUnit2016/>

The academic registration process





Final acceptance

First-year/ first-time students will only be able to register online if the admission status appears as “ACCEPTED/ ACCEPTED ON FINAL RESULTS”. You will not be able to register if your status reflects other statuses such as “Waiting List”, “Rejected”, “Course Full”, “Provisional Acceptance” or any “Incomplete” related statuses.

Successful applicants will also receive an automated sms.

You should track your status by accessing the tracking system on the CPUT website: <https://www.cput.ac.za/study/track>, or by logging into SOS, and going to “Student Enquiry” > “Academic Admission Status”

Year	Qualification	Faculty	Status	Academic Choice
2021	MTOLTR M TECH: QUALITY	Engineering & Built Environ.	Accepted	1
2020	MTOLTR M TECH: QUALITY	Engineering & Built Environ.	Accepted	1
2019	BTMECH B TECH: ENGINEERING : MECHANICAL	Engineering & Built Environ.	Accepted	1
2018	BTMECH B TECH: ENGINEERING : MECHANICAL	Engineering & Built Environ.	Provisionally Accepted	1

Note that there will be a line for each year you have applied, so make sure the year is the current year. If you applied for more than one qualification in a year, then each will be shown.

Registration restrictions

Even if you are fully accepted, there may still be obstacles that stop you from registering. You can check these statuses by logging into SOS, and going to [Academic Registration > Registration Restrictions](#). Any obstructions will be shown here – please refer to these when trying to sort out any issues with your registration.

- ### Financial clearance

Students with outstanding debt will not be able to proceed with the registration process unless the financial clearance indicator has been removed from your record, regardless of any other clearances obtained. Please refer to detailed financial matters from page 11 of this booklet.

You can check your status by logging into SOS, going to [Academic Registration > Registration Restrictions](#) and checking the section “Finance Blocks”.

Finance Blocks

Note: Finance Blocks that will **prevent** a student from proceeding will be listed here. (NTE_00029)

- These must be removed by the Finance Department

Status	Action	Exclusion	Start Date	End Date
STOP REGISTRATION. MINIMUM CREDIT	STOP REGISTRATION		20-DEC-2019	

Please note that an **end date will not be indicated**, as the finance blocks will be removed when you have met the requirements.

• Academic exclusions

Students will not be able to register until such time the academic exclusion indicator has been removed from your record (or expired) regardless of any other clearances obtained. Please refer to the Academic Exclusions information on page 19 of this booklet.

You can check your status by logging into SOS, and going to [Academic Registration > Registration Restrictions](#) and checking the section “Academic/ International Blocks”.

Academic / International Blocks

Note: Blocks that will **prevent** a student from proceeding will be listed here. Note that if you have passed the **End Date** then this Block will have finished, and will no longer stop you. (NTE_00027)

- Academic Blocks must be removed by the Department/Faculty
- International Blocks (e.g. “STOP REGISTRATION - FOREIGN STUDENT”) must be removed by the International Office.

Status	Action	Exclusion	Start Date	End Date
EXCLUDING STUDENT - QUALIFICATION LEVEL	Stop registration for a Qualification DIP: ICT IN APPLICATIONS DEVELOPMENT		11-DEC-2019	31-JAN-2020
EXCLUDING STUDENT - QUALIFICATION LEVEL	Stop registration for a Qualification ND: ENGINEERING: MECH (MECHATRONICS)		11-DEC-2019	31-JAN-2020

Note that there will be a line for each Academic Block – if you have more than one block, each of these will be shown with the relevant Start and End dates. Once the **End Date** is reached, **the block will expire, and will not stop you from continuing**.

• International clearance

All international students must first obtain international clearance, and will not be able to proceed with the registration process unless the international indicator has been removed from your record, regardless of any other clearances obtained. Please refer to the international matters/ clearance information on page 15 of this booklet.

Status	Action	Exclusion Start Date	End Date
STOP REGISTRATION - FOREIGN STUDENT	Stop academic registration	06-JAN-2020	31-DEC-2020

Note that ALL international students will have a block automatically loaded at the beginning of each year – this block will be removed once the International Requirements have been completed.

Off-campus and academic online registration

Registrations will only be conducted off-campus and online.

Students will not be able to register unless you have been given online registration permission to register (WEBR indicator), and have received all clearances as outlined above. The start and end date of this indicator must be active at the date you are registering. Please refer to the 8-step online registration on page 22.

Please refer to the off-campus manual registration process for those programmes that have not been identified for online registration elsewhere in this booklet.

Students who require off-campus assistance can contact the Call Centre or visit the following link for detailed contact information: <https://www.cput.ac.za/enquiries>

Student card

The information related to the issuing of student cards will be communicated to you in due course.

Residence registration

Students will not be able to conduct residence registrations unless academically registered. The residence registration related information will be communicated to you by the Residence Division.

Please refer to the 5-step online residence registration steps on page 33 of this booklet.

Students who require off-campus assistance can contact the Call Centre or visit the following link for detailed contact information: <https://www.cput.ac.za/enquiries>

Financial matters/ clearance

Off-campus financial clearance process

First time entering/ First-year students will be able to register without any financial clearance.

Students with outstanding debt will not be able to register until the financial block has been cleared by Finance. Students will only be able to proceed with registrations once financially cleared.

The online Financial Clearance process will be communicated to students via their MyCPUT email account.

Students with queries relating to any financial clearance may make contact with CPUT via email to:

**Pam Malawu (bentelep@cput.ac.za) and/or
Thembile Kunene (kunenet@cput.ac.za)**

CPUT will assess the outstanding debt, the academic record, and communicate a payment arrangement. Once the arrangement has been established, CPUT will remove the financial block and the student will be notified via their MyCPUT email account.

The following documentation is required for payment agreements:

- ID document of the student
- ID document and 3 months' bank statements of the person responsible for account payment

Although financially cleared, students will still not be able to register online in the event of any other existing pending clearances such as Academic Exclusions, International or pending final acceptance.

Tuition fees and off-campus payments

Students who are unable to pay the upfront payment of R3,500 for tuition and R1,500 for residence accommodation, will be allowed to register without the upfront payment.

Those who have already made the upfront payment will not be refunded, but the payment will contribute towards your 2021 fees.

Terms of payment: Tuition fees

Outstanding fees may be paid from February to November in monthly instalments of 10% of the fees for year courses, or from February to June in monthly instalments of 20% of the fees for semester courses. Payment can also be made by debit order over 10 months from February to November. No interest will be charged if the debit order is strictly adhered to.

Debit orders can be drawn on all types of bank accounts (current, savings and transmission), as well as debit cards. Debit order forms are available from the Student Debtors Department or online at www.cput.ac.za/study/fees

A discount of 5% for year courses will be allowed if payment is received by the end of February; and 2.5% per semester for semester courses will be allowed if payment is received by end February for semester 1 and end August for semester 2. For further information, email Student Debtors Department at christiansm@cput.ac.za

Off-campus payments

All students must pay their fees into the University's bank account, either by direct deposit or by electronic payment.

Please note:

- Use your **student number as reference** when making payments.
- Please have your proof of the bank deposit slip ready at all times.
- Allow 3 – 5 working days for the transaction to be processed and reflected on your student account.

The University's banking details are as follows:

Bank:	ABSA Bank
Branch:	Public Sector Cape Town
Account name:	Cape Peninsula University of Technology
Account Type:	Current account
Branch code:	632005
Account no:	4053548487
SWIFT code:	ABSA ZAJJ (for payments made outside South Africa)

NB: DO NOT HAND OVER MONEY OR YOUR REGISTRATION FORM TO ANYONE WHO CLAIMS TO BE ABLE TO REGISTER ON YOUR BEHALF!

Sponsorship

If an employer or bursar is responsible for paying your registration and tuition fees, then you must provide a letter from them (on an official letterhead) as written confirmation that the account will be settled.

The letter must be emailed, preferably well in advance of the registration date, to:

Nomakula Gama (gaman@cput.ac.za)
Cymantha Booysen (booyency@cput.ac.za) and/ or
Mphumzi Rululu (rululum@cput.ac.za).

Mowbray Campus students, email the letter to Curtis Pietersen (pietersencj@cput.ac.za).

Please ensure that the letter is addressed to the Cape Peninsula University of Technology, and that the dates are correct.



Financial aid

What is financial aid?

Financial assistance is awarded to academically deserving and financially needy students to help pay for study-related costs (fees, accommodation, books, etc.).

Types of financial aid

a) University-administered awards (bursaries)

- These are financed by donors who make funds available for the University to administer according to set criteria.
- University-administered awards are only for students in their second, third and fourth years.
- Applicants must be South African citizens, have a very good academic record, be assessed as financially needy, and make a contribution towards their studies. The size of awards varies.

b) National Student Financial Aid Scheme (NSFAS) (funding or loans)

- This is the South African government student loan and bursary scheme.
- NSFAS loans are available for both financially needy and academically deserving students. The criteria are set out in the application form and NSFAS brochure.

c) Merit bursaries

- First-year students who obtained an A aggregate in grade 12 in the year preceding their first registration at the University are eligible for these bursaries. They are only available during the first year of registration.

d) Nominated awards

- Off-campus agencies (companies, NGOs, etc.) award bursaries or scholarships to students who apply directly to them.

What to do if you need financial assistance

Students studying at Bellville, Tygerberg and Groote Schuur campuses

Application forms will be made available during the orientation programme.

Complete the application form and return it, along with the necessary documentation.

Contact details

Bellville Campus: NSFAS	Nina Soyekwa: soyekwan@cput.ac.za/ Cyrano Arries: arriesc@cput.ac.za	Tel.: 021 959 6349/ 6594/ 6238
Bellville Campus: University-administered awards	Cymantha Booysen: booysency@cput. ac.za	Tel.: 021 959 6578
Bellville Campus: Nominated awards	Nomakula Gama: gaman@cput.ac.za/ Curtis Pietersen: pietersencj@cput.ac.za	Tel.: 021 959 6493/ 6578
Mowbray Campus		Tel.: 021 680 4434/ 5662
Wellington Campus	Alex Bannister: bannistera@cput.ac.za	Tel.: 021 864 5546
District Six and Granger Bay campuses: NSFAS	Acia Peters: petersac@cput.ac.za Eric Feleza: felezae@cput.ac.za Nozuko Bandla: siyolon@cput.ac.za Patricia Faila: failap@cput.ac.za	Tel.: 021 460 3853/ 3059/ 3831/ 8341
District Six and Granger Bay campuses: International & Short Course funding		Tel.: 021 460 8398

Students who receive nominated awards should submit their award letters to the Financial Aid Office for processing. They should complete and return the application form before the closing date, along with the necessary documentation.

Please note the following

- Always adhere to closing dates – late applications or late submission of required documents will result in forfeiture of financial assistance.
- Not all applicants can be assisted – students are advised to apply widely for financial aid.
- Consult notice boards in the vicinity of the Financial Aid Office on your campus, your MyCPUT email address, and the CPUT website regularly for important information regarding financial assistance.
- All new applications must be submitted to NSFAS (www.nsfas.org.za)
- See criteria on all the above in the application form.

International matters and clearance

Academic registration procedure: International students

International registration clearance is compulsory for the following students:

- Refugee permit holders
- Asylum Seeker permit holders
- Non-SA citizen passport holders with a study visa (i.e. no SA ID number)

This clearance is not required for South African citizens and/or Permanent Residency students.

You will be required to submit the following documentation electronically (certified copies of the original documents, with the stamped certification date not older than 3 months) via email to the contact details below:

- Your refugee permit or study permit (receipts will not be accepted) made out for the Cape Peninsula University of Technology
- All school leaving results/ academic records
- Your passport
- Proof of comprehensive medical aid cover (valid for 12 months) and valid in South Africa
- International registration checklist downloadable from the CPUT website link <https://www.cput.ac.za/students/about/registration>
- Deposit slips
- Your acceptance letter downloadable from the CPUT website

No international students will be registered without proof of above mentioned documents.

Your international block will be removed once the international clearance has been completed. You may proceed with the registration process, provided that you are cleared from all other registration processes.

No international student will be registered without a valid visa (receipts will not be accepted) and a South African medical aid cover (valid for 12 months). The University reserves the right to verify the authenticity of all documentation. Disciplinary action will be taken should it be proven that fraudulent documents were submitted.

Part-time international students with work permits MUST also submit a South African medical aid cover (valid for 12 months) in order to be registered. This applies to returning students as well.

Contact details

Ms T Malaza

Bellville Campus
Tel: +27 (0) 21 959 6393
malazat@cput.ac.za

Ms H Mbolekwa

District Six/ Granger Bay Campus
Tel: +27 (0) 21 460 8390
mbolekwap@cput.ac.za

Ms M Daries

Bellville Campus
Tel: +27 (0) 21 959 8776
duplessismr@cput.ac.za

Ms G Dinnis

District Six/ Granger Bay Campus
Tel: +27 (0) 21 460 464 7229
dinnisg@cput.ac.za

Mr B Dase

Wellington Campus
Tel: +27 (0) 21 864 5503
daseb@cput.ac.za

Mr A Solomons

Mowbray Campus
Tel: +27 (0) 21 680 1546
solomonsa@cput.ac.za

Money matters

Returning international students with outstanding debt will not be allowed to register.

R1,500 International administration levy (non-refundable once-off payment for all students registering for the first time – except refugees and students with permanent residence in South Africa).

- Students who are unable to pay the upfront payment of R3,500 for tuition and R1,500 for residence accommodation, will be allowed to register without the upfront payment.
- International students (excluding students from Africa, or Mauritius, or refugees) pay double the official University course fees
- All international students (except refugees) are required to pay 50% or R5,000 of the anticipated fees for the year, the balance of the fees for the year is to be paid in May and September 2021 for the second semester programmes.
- International students (excluding students from Africa, or Mauritius, or refugees) pay double the official University course fees.

Medical aid cover (not applicable to refugees)

If you are an international student, you need a valid study visa to study at CPUT (receipts will not be accepted), as well as proof of valid South African medical aid cover (valid for 12 months)

- International students (excluding refugees) who choose to use one of the preferred medical schemes (Momentum Health, Comp Care and Discovery) should make provision for approximately **R4,308** for 12 months' medical cover (the minimum acceptable duration according to the Department of Home Affairs).

Medical aid cover payment options

Pay your contributions directly into the medical aid scheme's bank account. For details of the various medical aid options and their banking details, please consult the Guide for International Students.

Your student number must be clearly indicated on the deposit slip.

PLEASE NOTE

You will not be registered if the fees listed above have not been paid. If you have not paid the full deposit and fee prior to your arrival at the University, you should contact the medical aid scheme directly:

MOMENTUM HEALTH

Call Centre no: 0860 11 24 93

COMP CARE

Call Centre no: 0861 222 777

DISCOVERY 360 KEYCARE PLUS

Call Centre no: 0860 99 88 77

Link for further information and application to CompCare NetworX:

<http://www.studentplan.co.za>

Link for further information and application to Momentum Health:

<http://www.momentumhealth.co.za>

Link for further information and application to Discovery 360 Keycare Plus for students:

<http://www.360students.co.za>

Academic exclusions

Students who have been academically excluded for whatever reason, will not be able to register and an academic exclusion indicator will be reflecting on the student's record.

If a student feels there are extenuating circumstances, (for example a death in the family or illness) that could influence a decision on their re-admittance, the request for appeal must be submitted to the contact person whose name and email address was communicated to you in the letter informing you about the academic exclusion.

The faculty will e-mail the necessary appeal documentation, the submission due date and any other information to the student's CPUT email address.

The student must submit the following via e-mail back to the person who has communicated with you:

- 1) Request a full Academic Record electronically (visit the website link: <https://www.cput.ac.za/services/agc> for further details),
- 2) Completed Request for Appeal Form
- 3) Any other supporting documentation as required

The respective Academic Department in the Faculty will communicate the outcome of the appeal to the student via the student's CPUT email address.

The student will only be able to proceed with the registration process once the academic exclusion indicator has been removed provided that all other registration related clearances have also been completed.

Students who require off-campus assistance can contact the Call Centre or visit the following link for detailed contact information: <https://www.cput.ac.za/enquiries>

Academic pre-registration checklist

- 1) Always have the following documentation ready, and submit electronically, on request:
 - a) Letter of acceptance (first-year and first-time registering students only) – available from www.cput.ac.za/study/track;
 - b) Proof of payments (or proof of sponsorship letter);
 - c) Proof of school leaving results/ Grade 12 equivalence such as National Senior Certificate (NSC); National Certificate (Vocational) (NCV); international results;
 - d) Students registering for the first time and who have obtained their NCV will be requested by the respective faculties to submit prior to final evaluation; and
 - e) Any other qualifications obtained.

- 2) First-year registering students who have obtained their NSC in 2020:
 - a) Final evaluation (screening) of the 2020 NSC results will be conducted from Monday, 1 March 2021 until Friday, 5 March 2021. Any NSC results obtained will be verified against the official results as published by the Department of Basic Education and Training.
 - b) Acceptance will be confirmed via an automated sms to your cell phone number provided during your application.
 - c) Also frequently track your acceptance status via the link: <http://www.cput.ac.za/study/track>. This site shows the status immediately any changes are made, so gives the latest information.
 - d) Please commence with registration immediately after final acceptance.
 - e) Students who wrote their final Grade 12 exams in 2019 (or earlier), and have final acceptance, can register from as early as **Monday, 1 March 2021 until Friday, 12 March 2021**.

- 3) Students will be only able to register if the status reflects: **“ACCEPTED/ ACCEPTED ON FINAL RESULTS”** You will not be able to register if your status reflects other statuses such as “Waiting List”, “Rejected”, “Course Full”, “Provisional Acceptance” or any “Incomplete” related statuses.

- 4) Please register immediately, as space in the programmes fills up quickly.

- 5) Also take note of any procedures listed in letters that may have been forwarded to you from faculties. For Faculty of Health and Wellness Sciences applicants, please obtain the letter from: <http://www.cput.ac.za/students/about/orientation>

6) Students transferring from another university, including a university of technology:

Please submit your Statement of Results or Academic Record and a letter of good conduct from the other university to the Faculty. If you wish to apply for subject exemption or recognition, you should do so during registration.

- 7) The exemption/ recognition forms can be obtained from the Faculty Office. Applications for exemption or recognition must be submitted by 21 February 2021. These applications will be reviewed by a panel, and you should follow up to find out whether the application was successful. No late applications will be accepted.

8) Online registrations:

- a) Please take note that you will be given certain dates to register – this is your WEBR status – allowing you to register online. Without this status, you will not be able to register online at all.

You can register from the **Start Date** until the **End Date**, but try to register as soon as possible, as classes may fill up.

How to check this status:

First check these start and end dates if you are having problems registering – if you get the message, **“the institution has not permitted the use of this option to you as yet”**, this could be because you are trying to register before or after these dates.

If your qualification (programme) is not yet full, then these dates may be extended, so keep checking at: **“Academic Registration” > “Registration Restrictions”**. Note that there may be more than one date listed (e.g. from previous years, or if registration has been extended), so make sure that you are trying to register between these dates.

Status	Action	Exclusion	Start Date	End Date
ALLOW WEB REGISTRATION	Allow Web Registration		12-JAN-2021	20-JAN-2021
ALLOW WEB REGISTRATION	Allow Web Registration		02-JAN-2020	20-JAN-2020

Please refer to the faculty contact details in this booklet should you still be unable to register online.

Academic registration guide

Registrations will be conducted off-campus only.

Online assistance is available. Please refer to the section above, and access the link that contains all the contact information.

Students who require off-campus assistance can contact the Call Centre or visit the following link for detailed contact information: <https://www.cput.ac.za/enquiries>

You can register from the comfort of your own home, or wherever you have Internet access.

You can use a smart phone, tablet or a computer to register online. Please use Internet Explorer as your Internet search engine. No other browsers are certified for online registration at CPUT.

Specifications for your computer: Internet Explorer 7 or higher, with Adobe Acrobat Reader 7 or higher. No other browsers are certified for online registration at CPUT.

NOTE: Once you have completed your registration, it is very important that you check the following on your Proof of Registration printout:

- The **Registered for Period** (usually the whole year)
- The **Course, Offering Type** (i.e. Full-time or part-time) and **Campus**
- The **Subject Code** and **When the subject is offered** (semester 1, 2, or year)
- The **Exam Year** and **Month**
- The spelling of your **Name/s** and **Surname**

If you fail to make corrections before the amendment cut-off dates, you will be liable for the fees, and the subjects concerned will appear on your academic record as a **FAIL**.

Note that where you have failed lower level subjects that are prerequisites for the higher level subjects, the higher level subject will be **automatically de-registered in July**. It is the student's responsibility to check that the remaining subjects are correct for the second semester, **and to make any amendments if necessary**.

Please print out your Proof of Registration as evidence that you have completed the registration process. It is also critical that you check that you have registered for the correct courses for your academic programme and year level.


PROOF OF REGISTRATION								
To Whom It May Concern								
								11-Dec-2020
Student Number:	XXXXXXXXXX							
Student ID Number:	XXXXXXXXXXXXXXXXXX							
Name:	XXXXXXX XXXXXXXX							
Registered for Period:	09-Jan-2020 - 24-Dec-2020							
Qualification:	NDCIVL ND: ENGINEERING - CIVIL							
Subject	Description	Qual.	Class Group	Exam Year	Exam Month	Cancel	Offering Type	Amount
	1 SEMESTER ONE (JAN-JUN)							
CMR300S	REINFORCED CONCRETE AND MASONRY DESIGN 3	NDCIVL	A	2020	6	N	01	2490.00
GET301S	GEOTECHNICAL ENGINEERING 3 (THEORY)	NDCIVL	A	2020	6	N	01	1710.00
GET302S	GEOTECHNICAL ENGINEERING 3 (PRACTICAL)	NDCIVL	A	2020	6	N	01	580.00
STY300S	STRUCTURAL ANALYSIS 3	NDCIVL	A	2020	6	N	01	2420.00

8-step online academic registration guide

Step 1

- Go to the **Students** tab on the CPUT website and click on the **Student Online Services (SOS)** link, or use the direct link **www.cput.ac.za/sos**
- Click on **Login to SOS**.

Step 2

- **Registered Users** will appear.
- Select **Student** and type in your student number and personal identification number (PIN).
- Click on **Login** if you know your pin, otherwise click on **Request a PIN**. Your pin will be directed to your cell phone number.
- You may also access your pin by clicking on: **https://opa.cput.ac.za/scripts/itspin/getpin.php**. Enter your Student Number, ID or Passport Number, and Full Name. If you entered the information correctly, your **PIN** will be displayed on the page. Now use this PIN to log in to the Student Online Services (SOS) system **www.cput.ac.za/sos**
- You are now on the first page of the ITS iEnabler Online Registration. Click on the **blue question mark**  next to any item for more information.

Registered Users: Login Credentials

Student
 Personnel
 Other
 Alumni

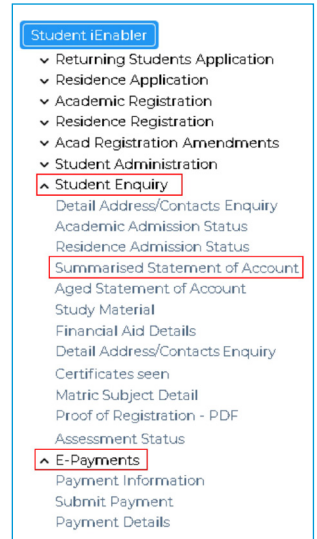
Student Number:

Pin:

(5 numeric digits. Do not start with a 0.)

Step 3

- Select **Student Enquiry** on the left.
- Go to **Summarised Statement of Account**.
Verify that the upfront payment of R3,500 shows as a credit on your account. **Contact Student Debtors and supply proof of payment if payment was made at least 72 hours earlier and the payment does not show.**
- To make a payment, click on **E-Payments**, follow the steps on screen, and click on **Pay Now**.
- Go back to **Summarised Statement of Account** if you want to verify that the payment reflects on your account.



Step 4

- Select **Student Administration** on the left.

PERSONAL INFORMATION UPDATE

- Select **Personal Information Update** on the left to verify personal details.
- You are only allowed to update the fields with a white border, for example: Alternate surname:
- Click on **Save** at the bottom of the page once you have updated any personal information.

To change any other personal details, you have to submit a formal request to the Admissions and Registration Centre (ARC) on-campus.

PERSONAL CONTACT DETAIL

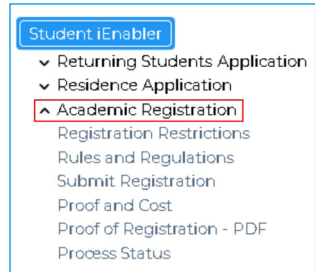
- Select **Personal Contact Detail** on the left to verify your contact details.
- If your contact details are not correct, select **Communication Type** to change existing contact details.
- If you want to add contact details, select **New Record**.
- Select **Save** at the bottom of the page to save your changes. Verify correctness.

ADDRESS VALIDATION

- Select **Address Validation** on the left to verify your address details.
- If your address details are not correct, select **Address Type** to change them.
- If you want to add new details, click on **New Record** to add new contact details.
- Click on **Save** at the bottom of the page to save your changes. Verify correctness.

Step 5

- Select **Academic Registration** on the left menu. Even if you are fully accepted, there may still be problems that stop you from registering. You can check these statuses under **Registration Restrictions**. Any issues that you may have will be shown here.



RULES AND REGULATIONS

- Select **Rules and Regulations** and read through the rules and regulations.
- Click on the **I Accept** button at the bottom. (You may have to scroll down to see it.)

Please note that acceptance of the **Rules and Regulations** is compulsory and serves as your electronic signature. This indicator is stored in your student file and will be used as a legal agreement in any dispute or disciplinary matter. If you do not accept the **Rules and Regulations**, the system will not allow you to continue.

Step 6


- Select **Submit Registration** on the left.
- Verify that the qualification details displayed for you are correct. All fields indicated with an asterisk (*) must be completed.
- Select your **Employment Status** from the drop-down list.
- Click on **Save and Continue** or **Save – Continue later** or **Restart Process**

Note:

- Select 'NO' in field 'Should we Create a Meal Account for you'
- All fields indicated with a * must be completed.
- Click on 'Save and Continue' button to proceed with registration process
- Click on 'Restart Process' button to restart registration process

Academic Year: 2020
 Qualification: NDELIX - ND: ENG: ELECTRICAL (INDUSTRIAL)(EXT)
 How am I going to study for this qualification: FT - FULLTIME (CAPE TOWN CAMPUS)
 When am I going to study for this qualification: 0 - YEAR (JAN-NOV)
 My intended study period: 0 - 0
 Should we Create a Meal Account for you: No
 Your Employment Status: Unemployed *

Save and Continue Save - Continue later Restart Process

- Select **Submit Registration >> Possible Subject Selection**.
- Select your subjects by ticking the box next to each subject. Please note the following:
 - You may not register for subjects where the **prerequisite** has not been met. These subjects will be indicated with a red button: 
 - Where **module subjects** are offered (e.g. Financial Accounting 1A and 1B), please ensure that you include the **mother subject or main subject** (e.g. Financial Accounting 1M). Refer to the subject choice form, as well as year subjects – **this is a once-off registration for the whole year**.

Other Subjects Available for Selection		
Subjects	Compulsory	Study Period
<input type="checkbox"/> ABS100S - APPLIED BUILDING SCIENCE 1	Yes	1 - YEAR ONE
<input type="checkbox"/> CMM100S - COMMUNICATIONS 1	Yes	1 - YEAR ONE
<input type="checkbox"/> CNT100S - CONSTRUCTION MANAGEMENT 1	Yes	1 - YEAR ONE
<input type="checkbox"/> COA100S - COMPUTER APPLICATIONS 1	Yes	1 - YEAR ONE
<input type="checkbox"/> CTM100S - CONSTRUCTION TECHNOLOGY 1	Yes	1 - YEAR ONE
<input type="checkbox"/> QSU100S - QUANTITY SURVEYING 1	Yes	1 - YEAR ONE
<input checked="" type="checkbox"/> CTM200S - CONSTRUCTION TECHNOLOGY 2.	Yes	2 - YEAR TWO
Subject CNT100S - CONSTRUCTION MANAGEMENT 1 must be completed before this subject may be selected.		
<input checked="" type="checkbox"/> QSU200S - QUANTITY SURVEYING 2.	Yes	2 - YEAR TWO
Subject CNT100S - CONSTRUCTION MANAGEMENT 1 must be completed before this subject may be selected.		

- Note that where the student fails lower level subjects that are prerequisites for the higher level subjects, the higher level subject will be **automatically de-registered in July**. It is the **student's responsibility** to check that the remaining subjects are correct for the second semester, **and to make any amendments if necessary**.
- Refer to your subject guidance form for more information - available from www.cput.ac.za/sos – click on the **Subject Choice Form** link and browse to your faculty/department.

ACADEMIC PERIOD SELECTION

- If the subjects are available in both semesters, then select **ONE** academic period which represents when you would like to study for each of the chosen subjects. Consult the **Subject Choice Form** to select the appropriate academic period, then click **Continue**.

Planned Subject Detail						
Subjects	Mode of Study	Academic Period	Attendance Type	Academic Credits		
ABS100S - APPLIED BUILDING SCIENCE 1	01 - FULL-TIME	BELLVILLE CAMPUS 0 - YEAR (JAN-NOV)	N - NORMAL EXAM	166		
CMM100S - COMMUNICATIONS 1	01 - FULL-TIME	BELLVILLE CAMPUS 0 - YEAR (JAN-NOV)	N - NORMAL EXAM	083		
CNT100S - CONSTRUCTION MANAGEMENT 1	01 - FULL-TIME	BELLVILLE CAMPUS 0 - YEAR (JAN-NOV)	N - NORMAL EXAM	166		
COA100S - COMPUTER APPLICATIONS 1	01 - FULL-TIME	BELLVILLE CAMPUS 0 - YEAR (JAN-NOV)	N - NORMAL EXAM	083		
CTM100S - CONSTRUCTION TECHNOLOGY 1	01 - FULL-TIME	BELLVILLE CAMPUS 0 - YEAR (JAN-NOV)	N - NORMAL EXAM	166		
QSU100S - QUANTITY SURVEYING 1	01 - FULL-TIME	BELLVILLE CAMPUS 0 - YEAR (JAN-NOV)	N - NORMAL EXAM	166		

Note:

- To make amendments use the **Process Trail** at the top of the page that will take you to the appropriate page
- Click **Restart Process** button to restart the registration process.
- Click on **Print Registration Details** should you want to print the details to a printer connected to your device.
- Click on **Continue** button to display and/or print Registration Costs.

(Mandatory Step 2 of 5) Next Step

ON THE NEXT SCREEN:

- Verify the selected subjects for the whole year. If you wish to change a subject, click the previous item on the process trail at the top of the web page.
 - When you have verified your subjects, as well as the semester you will be studying, click on the **Continue** button.
 - Select **“Save and Continue”** or **“Save – Continue later”** button.

PRINT REGISTRATION DETAILS OR PRINT COST DETAILS:

- You can use the Print Registration Details or Print Cost Details buttons to print a list of subjects or the costs, but note that **YOU ARE NOT YET REGISTERED AT THIS POINT – YOU MUST CLICK ON THE Accept Registration BUTTON TO COMPLETE THE REGISTRATION!!**

ACCEPT REGISTRATION:

- If you are satisfied with the subject selection, and want to register, click the **Accept Registration** button.

NOTE: Once you click on this button your registration is final, and you will be liable for any fees. Some changes are available online, but these must be made within the institutional cut-off dates. See **“How to add or cancel subjects, or cancel a qualification after registration”** on page 30 for more information.

Step 7

PROOF OF REGISTRATION

- Select **Proof of Registration** on the left to print your proof of registration.
- If you require this document to be printed on an official CPUT letterhead, visit any online registration venue on-campus (see registration schedule details starting on page 32). After the registration period, printed documents can be obtained from the Admissions and Registration Centre.
- Please verify that you have registered correctly by checking the information on the **Proof of Registration**.

PROOF AND STATEMENT

- Select **Proof and Statement (PDF)** on the left if you want to print a proof and statement.

PROCESS STATUS

- Click **Process Status** to check whether you have completed all the compulsory steps of the registration process.

Congratulations! You have successfully completed your registration.

Step 8

ISSUING OF STUDENT CARDS

Information regarding the issuing of student cards will be communicated to you in due course.

How to add or cancel subjects, or cancel a qualification after registration

You may use the **Acad Registration Amendments** menu to make changes to your registration.



ADDING A SUBJECT:

- To add a subject, select the **Add Subjects to a Registration** option, then double click on the blue highlighted qualification (NDMCHE in the example below), then select the subject(s) and follow the same process as you did when you registered (Step 6).
- NB:** If the subject you are adding has prerequisite subjects, then **YOU MUST ALSO REGISTER FOR THESE SUBJECTS AT THE SAME TIME.**

Add Subjects to a Registration

Note: Below is a list of current enrolments. Please click on the qualification code to add subjects to the selected enrolment.

Academic Year	Academic Period	Mode of Study	Qualification	Description
2020	0	01	NDMCHE	ND: ENGINEERING: MECHANICAL

CANCELLING A SUBJECT:

- To cancel a subject select the **Subjects Cancellation** option, then double click on the blue highlighted qualification (NDMCHE in the example above), then select the subject(s).
- You must select a reason for cancelling for each of the subjects (you will not be able to continue until you do), then click the **Save Subject Cancellation** button.
- If you want to cancel **ALL** your subjects, then use the **Qualification Cancellation** option.

Cancel	Subject	Description	Reason	Registration Date
<input type="checkbox"/>	ASM300S	APPLIED STRENGTH OF MATERIALS 3	==Please Choose==	19-OCT-2020
<input checked="" type="checkbox"/>	STL301S	STRENGTH OF MATERIALS 3	==Please Choose==	19-OCT-2020

WEB Change Decision

WEB Subject Clashes

WEB Financial Reasons

WEB Health Reasons

WEB Accepted Fulltime Employit


WEB Academic Performance

WEB Job Transfer

WEB Personal

==Please Choose==

IMPORTANT:


- If the subject you are cancelling is a prerequisite for a higher subject, then **THE HIGHER LEVEL SUBJECT WILL ALSO BE CANCELLED AT THE SAME TIME.**
- A red cross  is shown if you cannot cancel the subject, e.g. if it is after the deadline for cancellations, or you already have results for that subject.
- If you have cancelled a subject, and would like to re-register for it, you need to **UNCANCEL** the subject using the **Manual Amendment Form** – you cannot add it online – see error message below.

Subject(s)	Error(s) Encountered
ECN250S - ECONOMICS 1 EUS260S - BUSINESS COMPUTER APPLICATIONS 2	Student has cancelled registration for this year/subject/block - must be uncanceled Student has cancelled registration for this year/subject/block - must be uncanceled

CANCELLING A QUALIFICATION:


- To add a qualification, select the **Qualification Cancellation** option, double click on the blue highlighted qualification (NDMCHE in the example above), then select the qualification. You must select a reason for cancelling for each of the subjects (you will not be able to continue until you do), then click the **Save Qualification Cancellations** button.

Cancel	Qualification	Description	Reason	Registration Date
<input checked="" type="checkbox"/>	NDELCS	ND: ENG: ELECTRICAL (CONTROL SYSTEMS)	==Please Choose==	09-JAN-2019

An image of  indicates that the particular qualification is not available.

- WEB Change Decision
- WEB Subject Clashes
- WEB Financial Reasons
- WEB Health Reasons
- WEB Accepted Fulltime Employmt
- WEB Academic Performance
- WEB Job Transfer
- WEB Personal
- ==Please Choose==

IMPORTANT:

- If you cancel a qualification, then **ALL your subjects will also be cancelled!**
- A red cross  is shown if you cannot cancel the qualification, e.g. if it is after the deadline for cancellations or you already have results for a subject in that qualification.
- Note that if you have cancelled a qualification, and would like to re-register for it, you need to **UNCANCEL** the qualification using the **Manual Amendment Form** – you cannot register for this qualification again online.

Note that after making changes, you can reprint your new **Proof of Registration**.

Off-campus manual academic registration process

Off-campus manual registrations will only be possible for the following reasons:

- 1) Non-Degree Qualifications that are unable to register online as outlined in the faculty registration schedule.
- 2) Students who have attempted online registration, consulted the Faculty for assistance, and for whatever reasons (e.g. system not configured correctly, qualification/ subject related matters, etc.) cannot be resolved by the Faculty.

THE STEPS TO FOLLOW:

- The student must inform the Faculty via email by indicating the qualification he/she wants to register for, or is having difficulties to register for online. Please refer to contact details accessible via the Online Assistance link above.
- The Faculty will email registration, indemnity and subject choice forms to the student.
- The student will complete and sign the indemnity, subject choice and registration forms. Please amend information, if required, and return via email to the Faculty.
 - Off-campus payments should be done now (if required) before proceeding with the registration process.
 - Students who made a deposit at a bank prior to the registration date, or have a letter from an employer or bursar, must please include this in your return of forms to the Faculty via email.
- Academic clearance will be conducted within the Faculty once the duly completed forms listed above have been received.
- Once academically cleared, the request for Financial Clearance will be forwarded to Finance. This is applicable to all students.
- Once financially cleared, the Admissions and Registration Centre will capture and process the registration manually on your behalf.
- Each student will receive a Proof of Registration and a Statement of Account for verification, together with the allocated CPUT student number.
- The student must sign both forms to testify that it is correct, and return these to the person who has provided the documentation, via email.
- Students who require off-campus assistance can contact the Call Centre or visit the following link for detailed contact information:
<https://www.cput.ac.za/enquiries>

Residence registrations

- The residence registration process and related information will be communicated directly to you from the Residence Division at CPUT.
- Students who require off-campus assistance can contact the Call Centre or visit the following link for detailed contact information:
<https://www.cput.ac.za/enquiries>

The 5-step online residence registration guide

Step 1:

- Go to the **Students** tab on the CPUT website and click on the **Student Online Services (SOS)** link, or use the direct link www.cput.ac.za/sos
- Click on **Log in to SOS**.

Registered Users: Login Credentials

Student Personnel Other Alumni

Student Number:


Pin:

(5 numeric digits. Do not start with a 0.)

Login Forgot Pin Change Pin Request A Pin

[Forgot Student Number](#)

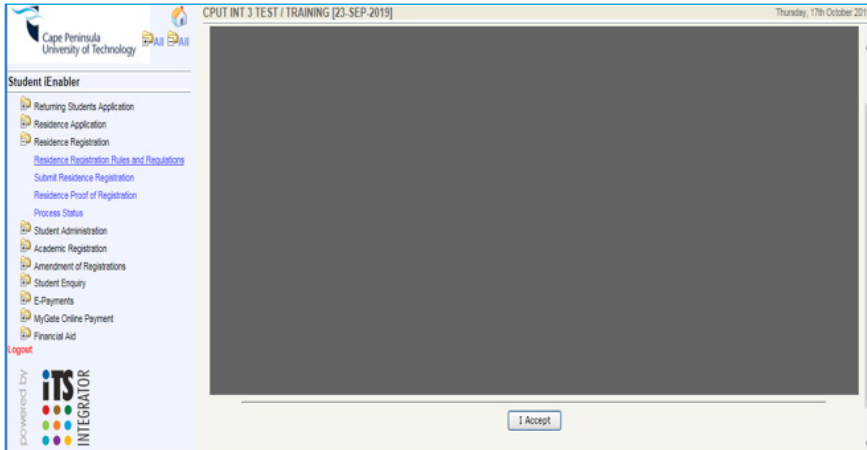
Step 2:

- **Registered Users** will appear.
- Select **Student** and type in your student number and personal identification number (PIN).
- Click on **Login** if you know your pin, otherwise click on **Request a PIN**. Your pin will be directed to your cell phone number.
- You may also access your pin by clicking on:
<https://opa.cput.ac.za/scripts/itspin/getpin.php>. Enter your Student Number, ID or Passport Number, and Full Name. If you entered the information correctly, your PIN will be displayed on the page. Now use this PIN to log in to the Student Online Serves (SOS) system www.cput.ac.za/sos.
- You are now on the first page of the ITS iEnabler Online Registration. Click on the **blue question marks**  next to any item for more information.

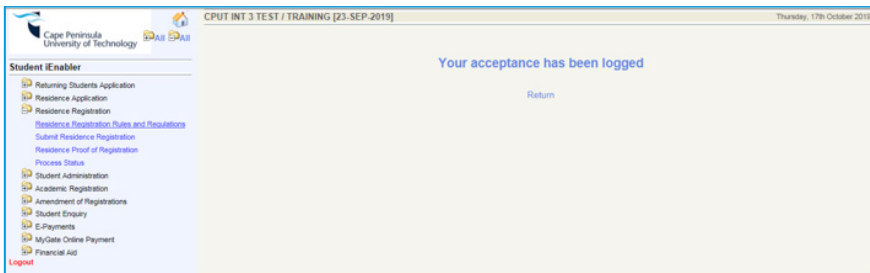
Step 3:

LOGON RESIDENCE REGISTRATION:

- Select **Residence Registration** on the left.
- Read student undertaking, and accept by clicking on **I Accept**.



- The following screen will appear



Step 4:

SUBMIT RESIDENCE REGISTRATION:

- Select **Submit Residence Registration** on the left.
- Select **Date in**; after selecting Date in the cost for residence room will appear.
- Accept registration by clicking on the **I Accept this Registration** button.

Cape Peninsula University of Technology

CPUT INT 3 TEST / TRAINING (23-SEP-2019) Thursday, 17th October 2019

Submit Residence Registration

Student Number: 220364524
Name: MS BONANG SESHEA

Note: Complete the registration form. Use the calendar button provided to select a date in the appropriate format. All fields indicated with a * must be completed. Click the 'Save' button in order to submit the entered information.

Academic Year	Block	Gender	Residence	Floor	Room	Stations	Date in	Date Out	Process Date
2020	0	F	6020 WOUTER MALAN RES - WELLINGTON	0	0001	2	09-JAN-2020	01-DEC-2020	17-OCT-2019

The cost for registering for this Residence room is R 28268.00

Accept this Registration Restart Process

- Once the student has accepted the registration, the following pop-up will appear, stating **Residence registration completed successfully**.
- Click **OK** and your Residence Registration will be completed.

Step 5:

PROOF OF REGISTRATION:

- Select **Proof of Residence Registration** on the left to print your proof of registration for submission at the student's respective residence.
- If you require this document to be printed on an official CPUT letterhead, visit any online registration venue on campus (see registration schedule details starting on page 36). After the registration period, printed documents can be obtained from the Admissions and Registration Centre.
- Please verify that you have registered correctly by checking the information on the Proof of Residence.

Student iEnabler

Return Students Application
Residence Application
Residence Registration
Residence Registration Rules and Regulations
Submit Residence Registration
Residence Proof of Registration

PROOF OF RESIDENCE REGISTRATION

TO WHOM IT MAY CONCERN

17-OCT-2019

This serves to confirm that

FULL NAME OF STUDENT MS B SESHEA
IDENTITY NUMBER 0002250215080
STUDENT NUMBER 220364524

Is a registered student of CPUT INT 3 TEST / TRAINING (23-SEP-2019) for 2020 and resides at

NAME OF RESIDENCE WOUTER MALAN RES - WELLINGTON
FLOOR 0
ROOM 0001
OCCUPATION DATE 09-JAN-2020

FULL ADDRESS

We trust that the above meets with your requirements.
Thank you

powered by ITS INTEGRATOR

Academic registration dates

FACULTY OF APPLIED SCIENCES

FIRST-YEAR REGISTRATIONS

REGISTRATION TIME: 09:00 – 15:00 (online assistance)

Note: Due to the COVID-19 pandemic, only off-campus assistance and registrations will be possible.

Students who require off-campus assistance can contact the Call Centre or visit the following link for detailed contact information: <https://www.cput.ac.za/enquiries>

Students who wrote their Final Grade 12 Exams in 2019 (or earlier), and have final acceptance, can register from as early as 1 March 2021 until 12 March 2021.

Final evaluation (screening) of the 2020 NSC results will be conducted from 1–5 March 2021. Any NSC results obtained will be verified against the official results as published by the Department of Basic Education and Training. Acceptance will be confirmed via an automated sms to your cell phone number provided during your application. Also frequently track your acceptance status via the link <http://www.cput.ac.za/study/track>. This site updates status immediately if any changes are made, so gives the latest information.

Please commence with registration immediately after final acceptance.

BELLVILLE CAMPUS

ONLINE REGISTRATION PROGRAMMES	REGISTRATION DATES	
	ONLINE START	ONLINE END
DEPARTMENT: CHEMISTRY		
DIPLOMA IN ANALYTICAL CHEMISTRY (First-years)	01-Mar-21	12-Mar-21
DIPLOMA IN ANALYTICAL CHEMISTRY (EXTENDED) (First-years)	01-Mar-21	12-Mar-21
DEPARTMENT: FOOD SCIENCES AND TECHNOLOGY		
DIPLOMA IN FOOD TECHNOLOGY (First-years)	01-Mar-21	12-Mar-21
DIPLOMA IN FOOD TECHNOLOGY (EXTENDED) (First-years)	01-Mar-21	12-Mar-21
DEPARTMENT: HORTICULTURAL SCIENCES		
DIPLOMA IN HORTICULTURE (First-years)	01-Mar-21	12-Mar-21
DIPLOMA IN HORTICULTURE (EXTENDED) (First-years)	01-Mar-21	12-Mar-21
DIPLOMA IN LANDSCAPE ARCHITECTURE (First-years)	01-Mar-21	12-Mar-21
DIPLOMA IN LANDSCAPE ARCHITECTURE (EXTENDED) (First-years)	01-Mar-21	12-Mar-21

FIRST-YEAR REGISTRATIONS

BELLVILLE CAMPUS

ONLINE REGISTRATION PROGRAMMES	REGISTRATION DATES	
	ONLINE START	ONLINE END
DEPARTMENT: MATHEMATICS & PHYSICS		
DIPLOMA IN MATHEMATICAL SCIENCES (First-years)	01-Mar-21	12-Mar-21
DIPLOMA IN MATHEMATICAL SCIENCES (EXTENDED) (First-years)	01-Mar-21	12-Mar-21

REGISTRATION TIME: 09:00 – 15:00 (online assistance)

Students who require off-campus assistance can contact the Call Centre or visit the following link for detailed contact information: <https://www.cput.ac.za/enquiries>

NOTE: Due to the COVID-19 pandemic, students will only be able to do their registration online; and only off-campus assistance will be possible.

OTHER LEVELS OF STUDYING REGISTRATIONS

BELLVILLE CAMPUS

ONLINE REGISTRATION PROGRAMMES	REGISTRATION DATES	
	ONLINE START	ONLINE END
DEPARTMENT: CHEMISTRY		
ND: ANALYTICAL CHEMISTRY (Phased out - Senior Students only)	11-Jan-21	05-Feb-21
ND: ANALYTICAL CHEMISTRY (EXTENDED) (Phased out - Senior Students only)	11-Jan-21	05-Feb-21
DIPLOMA IN ANALYTICAL CHEMISTRY (Senior Students)	11-Jan-21	05-Feb-21
DIPLOMA IN ANALYTICAL CHEMISTRY (EXTENDED) (Senior Students)	11-Jan-21	05-Feb-21
B TECH: CHEMISTRY (Phased out - Senior Students only)	11-Jan-21	05-Feb-21
ADVANCED DIPLOMA IN ANALYTICAL CHEMISTRY	11-Jan-21	05-Feb-21
M TECH: CHEMISTRY (Course Based) (Phased out - Senior Students only)	11-Jan-21	05-Feb-21
MASTER OF APPLIED SCIENCE IN CHEMISTRY (New Students)	11-Jan-21	31-May-21
MASTER OF APPLIED SCIENCE IN CHEMISTRY (Returning Students)	11-Jan-21	05-Feb-21
PHD IN CHEMISTRY (New Students)	11-Jan-21	31-May-21
PHD IN CHEMISTRY (Returning Students)	11-Jan-21	05-Feb-21

FACULTY OF APPLIED SCIENCES

OTHER LEVELS OF STUDYING REGISTRATIONS

BELLVILLE CAMPUS

ONLINE REGISTRATION PROGRAMMES	REGISTRATION DATES	
	ONLINE START	ONLINE END
DEPARTMENT: FOOD SCIENCES AND TECHNOLOGY		
FOOD TECHNOLOGY: NON-DIPLOMA	11-Jan-21	05-Feb-21
ND: FOOD TECHNOLOGY (Phased out - Senior Students only)	11-Jan-21	05-Feb-21
ND: FOOD TECHNOLOGY (EXTENDED) (Phased out - Senior Students only)	11-Jan-21	05-Feb-21
DIPLOMA IN FOOD TECHNOLOGY (Senior Students)	11-Jan-21	05-Feb-21
DIPLOMA IN FOOD TECHNOLOGY (EXTENDED) (Senior Students)	11-Jan-21	05-Feb-21
B TECH: FOOD TECHNOLOGY (Phased out - Senior Students only)	11-Jan-21	05-Feb-21
BACHELOR OF FOOD SCIENCE AND TECHNOLOGY (only available for CPUT National Diploma and Diploma graduates)	11-Jan-21	05-Feb-21
M TECH: FOOD TECHNOLOGY (Phased out - Senior Students only)	11-Jan-21	05-Feb-21
MASTER OF FOOD SCIENCE AND TECHNOLOGY (New Students)	11-Jan-21	31-May-21
MASTER OF FOOD SCIENCE AND TECHNOLOGY (Returning Students)	11-Jan-21	05-Feb-21
DOCTOR OF FOOD SCIENCE AND TECHNOLOGY (New Students)	11-Jan-21	31-May-21
DOCTOR OF FOOD SCIENCE AND TECHNOLOGY (Returning Students)	11-Jan-21	05-Feb-21
DEPARTMENT: HORTICULTURAL SCIENCES		
HORTICULTURE: NON-DIPLOMA	11-Jan-21	05-Feb-21
ND: HORTICULTURE (Phased out - Senior Students only)	11-Jan-21	05-Feb-21
ND: HORTICULTURE (EXTENDED) (Phased out - Senior Students only)	11-Jan-21	05-Feb-21
ND: LANDSCAPE TECHNOLOGY (Phased out - Senior Students only)	11-Jan-21	05-Feb-21
ND: LANDSCAPE TECHNOLOGY (EXTENDED) (Phased out - Senior Students only)	11-Jan-21	05-Feb-21
DIPLOMA IN HORTICULTURE (Senior Students)	11-Jan-21	05-Feb-21
DIPLOMA IN HORTICULTURE (EXTENDED) (Senior Students)	11-Jan-21	05-Feb-21
DIPLOMA IN LANDSCAPE ARCHITECTURE (Senior Students)	11-Jan-21	05-Feb-21

OTHER LEVELS OF STUDYING REGISTRATIONS

BELLVILLE CAMPUS

ONLINE REGISTRATION PROGRAMMES	REGISTRATION DATES	
	ONLINE START	ONLINE END
DEPARTMENT: HORTICULTURAL SCIENCES (Cntd.)		
DIPLOMA IN LANDSCAPE ARCHITECTURE (EXTENDED) (Senior Students)	11-Jan-21	05-Feb-21
B TECH: HORTICULTURE (Phased out - Senior Students only)	11-Jan-21	05-Feb-21
B TECH: LANDSCAPE TECHNOLOGY (Phased out - Senior Students only)	11-Jan-21	05-Feb-21
ADVANCED DIPLOMA IN HORTICULTURE	11-Jan-21	05-Feb-21
ADVANCED DIPLOMA IN LANDSCAPE CONSTRUCTION MANAGEMENT	11-Jan-21	05-Feb-21
MASTER OF HORTICULTURAL SCIENCE (New Students)	11-Jan-21	31-May-21
MASTER OF HORTICULTURAL SCIENCE (Returning Students)	11-Jan-21	05-Feb-21
DOCTOR OF HORTICULTURE (New Students)	11-Jan-21	31-May-21
DOCTOR OF HORTICULTURE (Returning Students)	11-Jan-21	05-Feb-21
DEPARTMENT: MATHEMATICS & PHYSICS		
MATHEMATICAL SCIENCES: NON-DIPLOMA/ DEGREE	11-Jan-21	05-Feb-21
ND: MATH TECHNOLOGY: APPLIED SCIENCE (Phased out - Senior Students only)	11-Jan-21	05-Feb-21
ND: MATH TECH: APPLIED SCIENCE (EXTENDED) (Phased out - Senior Students only)	11-Jan-21	05-Feb-21
ND: MATHEMATICAL TECHNOLOGY: BUSINESS (Phased out - Senior Students only)	11-Jan-21	05-Feb-21
ND: MATHEMATICAL TECHNOLOGY: CHEMICAL INDUSTRY (Phased out - Senior Students only)	11-Jan-21	05-Feb-21
ND: MATHEMATICAL TECHNOLOGY: CHEMICAL INDUSTRY(EXTENDED) (Phased out - Senior Students only)	11-Jan-21	05-Feb-21
DIPLOMA IN MATHEMATICAL SCIENCES (Senior Students)	11-Jan-21	05-Feb-21
DIPLOMA IN MATHEMATICAL SCIENCES (EXTENDED) (Senior Students)	11-Jan-21	05-Feb-21
ADVANCED DIPLOMA IN MATHEMATICAL SCIENCES	11-Jan-21	05-Feb-21

FACULTY OF APPLIED SCIENCES

FIRST-YEAR REGISTRATIONS

REGISTRATION TIME: 09:00 – 15:00 (online assistance)

Note: Due to the COVID-19 pandemic, only off-campus assistance and registrations will be possible.

Students who require off-campus assistance can contact the Call Centre or visit the following link for detailed contact information: <https://www.cput.ac.za/enquiries>

Students who wrote their Final Grade 12 Exams in 2019 (or earlier), and have final acceptance, can register from as early as 1 March 2021 until 12 March 2021.

Final evaluation (screening) of the 2020 NSC results will be conducted from 1–5 March 2021. Any NSC results obtained will be verified against the official results as published by the Department of Basic Education and Training. Acceptance will be confirmed via an automated sms to your cell phone number provided during your application. Also frequently track your acceptance status via the link <http://www.cput.ac.za/study/track>. This site updates status immediately if any changes are made, so gives the latest information.

Please commence with registration immediately after final acceptance.

DISTRICT SIX CAMPUS

ONLINE REGISTRATION PROGRAMMES	REGISTRATION DATES	
	ONLINE START	ONLINE END
DEPARTMENT: CONSERVATION & MARINE SCIENCES		
DIPLOMA IN NATURE CONSERVATION (First-years)	01-Mar-21	12-Mar-21
DIPLOMA IN NATURE CONSERVATION (EXTENDED) (First-years)	01-Mar-21	12-Mar-21
DIPLOMA IN MARINE SCIENCE (First-years)	01-Mar-21	12-Mar-21
DIPLOMA IN MARINE SCIENCE (EXTENDED) (First-years)	01-Mar-21	12-Mar-21
DEPARTMENT: ENVIRONMENTAL & OCCUPATIONAL STUDIES		
DIPLOMA IN ENVIRONMENTAL MANAGEMENT (First-years)	01-Mar-21	12-Mar-21
DIPLOMA IN ENVIRONMENTAL MANAGEMENT (EXTENDED) (First-years)	01-Mar-21	12-Mar-21
BACHELOR OF ENVIRONMENTAL HEALTH (First-years)	01-Mar-21	12-Mar-21
DEPARTMENT: BIOTECHNOLOGY & CONSUMER SCIENCES		
DIPLOMA IN BIOTECHNOLOGY (First-years)	01-Mar-21	12-Mar-21
DIPLOMA IN BIOTECHNOLOGY (EXTENDED) (First-years)	01-Mar-21	12-Mar-21
DIPLOMA CONSUMER SCIENCE IN FOOD AND NUTRITION (First-years)	01-Mar-21	12-Mar-21
DIPLOMA CONSUMER SCIENCE IN FOOD AND NUTRITION (EXTENDED) (First-years)	01-Mar-21	12-Mar-21

REGISTRATION TIME: 09:00 – 15:00 (online assistance)

Students who require off-campus assistance can contact the Call Centre or visit the following link for detailed contact information: <https://www.cput.ac.za/enquiries>

NOTE: Due to the COVID-19 pandemic, students will only be able to do their registration online; and only off-campus assistance will be possible.

OTHER LEVELS OF STUDYING REGISTRATIONS

DISTRICT SIX CAMPUS

ONLINE REGISTRATION PROGRAMMES	REGISTRATION DATES	
	ONLINE START	ONLINE END
DEPARTMENT: CONSERVATION & MARINE SCIENCES		
ND: NATURE CONSERVATION (Phased out - Senior Students only)	11-Jan-21	05-Feb-21
DIPLOMA IN NATURE CONSERVATION (Senior Students)	11-Jan-21	05-Feb-21
DIPLOMA IN NATURE CONSERVATION (EXTENDED) (Senior Students)	11-Jan-21	05-Feb-21
DIPLOMA IN MARINE SCIENCE (Senior Students)	11-Jan-21	05-Feb-21
DIPLOMA IN MARINE SCIENCE (EXTENDED) (Senior Students)	11-Jan-21	05-Feb-21
B TECH: NATURE CONSERVATION (Phased out - Senior Students only)	11-Jan-21	05-Feb-21
B TECH: OCEANOGRAPHY (Phased out - Senior Students only)	11-Jan-21	05-Feb-21
ADVANCED DIPLOMA IN MARINE SCIENCE	11-Jan-21	05-Feb-21
ADVANCED DIPLOMA IN NATURE CONSERVATION	11-Jan-21	05-Feb-21
M TECH: NATURE CONSERVATION (Phased out - Senior Students only)	11-Jan-21	05-Feb-21
MASTER OF CONSERVATION SCIENCE (New Students)	11-Jan-21	31-May-21
MASTER OF CONSERVATION SCIENCE (Returning Students)	11-Jan-21	05-Feb-21

FACULTY OF APPLIED SCIENCES

OTHER LEVELS OF STUDYING REGISTRATIONS

DISTRICT SIX CAMPUS

ONLINE REGISTRATION PROGRAMMES	REGISTRATION DATES	
	ONLINE START	ONLINE END
DEPARTMENT: ENVIRONMENTAL & OCCUPATIONAL STUDIES		
DIPLOMA IN ENVIRONMENTAL MANAGEMENT (Senior Students)	11-Jan-21	05-Feb-21
DIPLOMA IN ENVIRONMENTAL MANAGEMENT (EXTENDED) (Senior Students)	11-Jan-21	05-Feb-21
ND: ENVIRONMENTAL HEALTH (Phased out - Senior Students only)	11-Jan-21	05-Feb-21
ND: ENVIRONMENTAL MANAGEMENT (Phased out - Senior Students only)	11-Jan-21	05-Feb-21
ND: ENVIRONMENTAL MANAGEMENT (EXTENDED) (Phased out - Senior Students only)	11-Jan-21	05-Feb-21
BACHELOR OF ENVIRONMENTAL HEALTH (Senior Students)	11-Jan-21	05-Feb-21
B TECH: ENVIRONMENTAL HEALTH (Phased out - Senior Students only)	11-Jan-21	05-Feb-21
B TECH: ENVIRONMENTAL MANAGEMENT (Phased out - Senior Students only)	11-Jan-21	05-Feb-21
ADVANCED DIPLOMA IN ENVIRONMENTAL MANAGEMENT	11-Jan-21	05-Feb-21
M TECH: ENVIRONMENTAL HEALTH (Phased out - Senior Students only)	11-Jan-21	05-Feb-21
M TECH: ENVIRONMENTAL MANAGEMENT Course Based (Phased out - Senior Students only)	11-Jan-21	05-Feb-21
MASTER OF ENVIRONMENTAL HEALTH (New Students)	11-Jan-21	31-May-21
MASTER OF ENVIRONMENTAL HEALTH (Returning Students)	11-Jan-21	05-Feb-21
MASTER OF ENVIRONMENTAL MANAGEMENT Course Based (New Students)	11-Jan-21	05-Feb-21
MASTER OF ENVIRONMENTAL MANAGEMENT Course Based (Returning Students)	11-Jan-21	05-Feb-21
PHD IN ENVIRONMENTAL HEALTH (New Students)	11-Jan-21	31-May-21
PHD IN ENVIRONMENTAL HEALTH (Returning Students)	11-Jan-21	05-Feb-21

OTHER LEVELS OF STUDYING REGISTRATIONS

DISTRICT SIX CAMPUS

ONLINE REGISTRATION PROGRAMMES	REGISTRATION DATES	
	ONLINE START	ONLINE END
DEPARTMENT: BIOTECHNOLOGY & CONSUMER SCIENCES		
ND: BIOTECHNOLOGY (Phased out - Senior Students only)	11-Jan-21	05-Feb-21
ND: BIOTECHNOLOGY (EXTENDED) (Phased out - Senior Students only)	11-Jan-21	05-Feb-21
ND: CONSUMER SCIENCE: FOOD AND NUTRITION (Phased out - Senior Students only)	11-Jan-21	05-Feb-21
ND: CONSUMER SCIENCE: FOOD AND NUTRITION (EXTENDED) (Phased out - Senior Students only)	11-Jan-21	05-Feb-21
DIPLOMA IN BIOTECHNOLOGY (Senior Students)	11-Jan-21	05-Feb-21
DIPLOMA IN BIOTECHNOLOGY (EXTENDED) (Senior Students)	11-Jan-21	05-Feb-21
DIPLOMA CONSUMER SCIENCE IN FOOD AND NUTRITION (Senior Students)	11-Jan-21	05-Feb-21
DIPLOMA CONSUMER SCIENCE IN FOOD AND NUTRITION (EXTENDED) (Senior Students)	11-Jan-21	05-Feb-21
B TECH: CONSUMER SCIENCE: FOOD & NUTRITION (Phased out - Senior Students only)	11-Jan-21	05-Feb-21
ADVANCED DIPLOMA IN BIOTECHNOLOGY	11-Jan-21	05-Feb-21
ADVANCED DIPLOMA IN CONSUMER SCIENCE IN FOOD & NUTRITION	11-Jan-21	05-Feb-21
M TECH: CONSUMER SCIENCE: FOOD AND NUTRITION (Phased out - Senior Students only)	11-Jan-21	05-Feb-21
MASTER OF CONSUMER SCIENCE: FOOD & NUTRITION (New Students)	11-Jan-21	31-May-21
MASTER OF CONSUMER SCIENCE: FOOD & NUTRITION (Returning Students)	11-Jan-21	05-Feb-21

FACULTY OF APPLIED SCIENCES

FIRST-YEAR REGISTRATIONS

REGISTRATION TIME: 09:00 – 15:00 (online assistance)

Note: Due to the COVID-19 pandemic, only off-campus assistance and registrations will be possible.

Students who require off-campus assistance can contact the Call Centre or visit the following link for detailed contact information: <https://www.cput.ac.za/enquiries>

Students who wrote their Final Grade 12 Exams in 2019 (or earlier), and have final acceptance, can register from as early as 1 March 2021 until 12 March 2021.

Final evaluation (screening) of the 2020 NSC results will be conducted from 1–5 March 2021. Any NSC results obtained will be verified against the official results as published by the Department of Basic Education and Training. Acceptance will be confirmed via an automated sms to your cell phone number provided during your application. Also frequently track your acceptance status via the link <http://www.cput.ac.za/study/track>. This site updates status immediately if any changes are made, so gives the latest information.

Please commence with registration immediately after final acceptance.

WELLINGTON CAMPUS

ONLINE REGISTRATION PROGRAMMES	REGISTRATION DATES	
	ONLINE START	ONLINE END
DEPARTMENT: AGRICULTURE		
DIPLOMA IN AGRICULTURE (First-years)	01-Mar-21	12-Mar-21
DIPLOMA IN AGRICULTURAL MANAGEMENT (First-years)	01-Mar-21	12-Mar-21

REGISTRATION TIME: 09:00 – 15:00 (online assistance)

Students who require off-campus assistance can contact the Call Centre or visit the following link for detailed contact information: <https://www.cput.ac.za/enquiries>

NOTE: Due to the COVID-19 pandemic, students will only be able to do their registration online; and only off-campus assistance will be possible.

OTHER LEVELS OF STUDYING REGISTRATIONS

WELLINGTON CAMPUS

ONLINE REGISTRATION PROGRAMMES	REGISTRATION DATES	
	ONLINE START	ONLINE END
DEPARTMENT: AGRICULTURE		
ND: AGRICULTURE: ANIMAL PRODUCTION (Phased out -Senior Students only)	11-Jan-21	05-Feb-21
ND: AGRICULTURE: CROP (Phased out - Senior Students only)	11-Jan-21	05-Feb-21
ND: AGRICULTURE: VITICULTURE AND OENOLOGY (Phased out - Senior Students only)	11-Jan-21	05-Feb-21
DIPLOMA IN AGRICULTURE (Senior Students)	11-Jan-21	05-Feb-21
DIPLOMA IN AGRICULTURAL MANAGEMENT (Senior Students)	11-Jan-21	05-Feb-21
B TECH: AGRICULTURE (Phased out - Senior Students only)	11-Jan-21	05-Feb-21
ADVANCED DIPLOMA IN AGRICULTURE AND CROP PRODUCTION	11-Jan-21	05-Feb-21
ADVANCED DIPLOMA IN AGRICULTURE AND LIVESTOCK PRODUCTION	11-Jan-21	05-Feb-21
M TECH: AGRICULTURE (Phased out - Returning Students only)	11-Jan-21	05-Feb-21
MASTER OF AGRICULTURE (New Students)	11-Jan-21	31-May-21
MASTER OF AGRICULTURE (Returning Students)	11-Jan-21	05-Feb-21

FACULTY OF BUSINESS & MANAGEMENT SCIENCES

FIRST-YEAR REGISTRATIONS

REGISTRATION TIME: 09:00 – 15:00 (online assistance)

Note: Due to the COVID-19 pandemic, only off-campus assistance and registrations will be possible.

Students who require off-campus assistance can contact the Call Centre or visit the following link for detailed contact information: <https://www.cput.ac.za/enquiries>

Students who wrote their Final Grade 12 Exams in 2019 (or earlier), and have final acceptance, can register from as early as 1 March 2021 until 12 March 2021.

Final evaluation (screening) of the 2020 NSC results will be conducted from 1–5 March 2021. Any NSC results obtained will be verified against the official results as published by the Department of Basic Education and Training. Acceptance will be confirmed via an automated sms to your cell phone number provided during your application. Also frequently track your acceptance status via the link <http://www.cput.ac.za/study/track>. This site updates status immediately if any changes are made, so gives the latest information.

Please commence with registration immediately after final acceptance.

BELLVILLE CAMPUS

ONLINE REGISTRATION PROGRAMMES	REGISTRATION DATES	
	ONLINE START	ONLINE END
DEPARTMENT: MANAGEMENT & PROJECT MANAGEMENT		
DIPLOMA IN MANAGEMENT (First-years)	01-Mar-21	12-Mar-21
DEPARTMENT: APPLIED LEGAL STUDIES		
BACHELOR OF PARALEGAL STUDIES (First-years)	01-Mar-21	12-Mar-21
DEPARTMENT: OPERATIONS MANAGEMENT		
DIPLOMA IN OPERATIONS MANAGEMENT (First-years)	01-Mar-21	12-Mar-21

REGISTRATION TIME: 09:00 – 15:00 (online assistance)

Students who require off-campus assistance can contact the Call Centre or visit the following link for detailed contact information: <https://www.cput.ac.za/enquiries>

NOTE: Due to the COVID-19 pandemic, students will only be able to do their registration online; and only off-campus assistance will be possible.

OTHER LEVELS OF STUDYING REGISTRATIONS

BELLVILLE CAMPUS

ONLINE REGISTRATION PROGRAMMES	REGISTRATION DATES	
	ONLINE START	ONLINE END
DEPARTMENT: MANAGEMENT & PROJECT MANAGEMENT		
ND: MANAGEMENT (Phased Out - Senior Students Only)	12-Jan-21	05-Feb-21
DIPLOMA IN MANAGEMENT (Senior Students)	12-Jan-21	05-Feb-21
DEPARTMENT: APPLIED LEGAL STUDIES		
BACHELOR OF PARALEGAL STUDIES (Senior Students)	12-Jan-21	05-Feb-21
DEPARTMENT: OPERATIONS MANAGEMENT		
ND: OPERATIONS MANAGEMENT (Phased Out - Senior Students Only)	12-Jan-21	05-Feb-21
DIPLOMA IN OPERATIONS MANAGEMENT (SENIOR STUDENTS)		
ADVANCED DIPLOMA IN OPERATIONS MANAGEMENT	11-Jan-21	05-Feb-21

BELLVILLE CAMPUS (PROGRAMMES NOT FOR ONLINE REGISTRATIONS)

MANUAL REGISTRATION PROGRAMMES (NOT FOR ONLINE REGISTRATION)

****PLEASE FOLLOW THE OFF-CAMPUS MANUAL REGISTRATION PROCESS OUTLINED IN THE REGISTRATION BOOKLET****

ALL DEPARTMENTS

NON-DEGREE PURPOSES ONLY

FACULTY OF BUSINESS & MANAGEMENT SCIENCES

FIRST-YEAR REGISTRATIONS

REGISTRATION TIME: 09:00 – 15:00 (online assistance)

Note: Due to the COVID-19 pandemic, only off-campus assistance and registrations will be possible.

Students who require off-campus assistance can contact the Call Centre or visit the following link for detailed contact information: <https://www.cput.ac.za/enquiries>

Students who wrote their Final Grade 12 Exams in 2019 (or earlier), and have final acceptance, can register from as early as 1 March 2021 until 12 March 2021.

Final evaluation (screening) of the 2020 NSC results will be conducted from 1–5 March 2021. Any NSC results obtained will be verified against the official results as published by the Department of Basic Education and Training. Acceptance will be confirmed via an automated sms to your cell phone number provided during your application. Also frequently track your acceptance status via the link <http://www.cput.ac.za/study/track>. This site updates status immediately if any changes are made, so gives the latest information.

Please commence with registration immediately after final acceptance.

DISTRICT SIX & MOWBRAY CAMPUSES (DISTRICT SIX CAMPUS ONLINE ASSISTANCE)

ONLINE REGISTRATION PROGRAMMES	REGISTRATION DATES	
	ONLINE START	ONLINE END
DEPARTMENT: HUMAN RESOURCE MANAGEMENT		
DIPLOMA IN HUMAN RESOURCE MANAGEMENT (First-years)	01-Mar-21	12-Mar-21
DIPLOMA IN HUMAN RESOURCE MANAGEMENT (EXTENDED) (First-years)	01-Mar-21	12-Mar-21
DEPARTMENT: MANAGEMENT & PROJECT MANAGEMENT		
DIPLOMA IN MANAGEMENT (First-years)	01-Mar-21	12-Mar-21
DIPLOMA IN MANAGEMENT (EXTENDED) (First-years)	01-Mar-21	12-Mar-21
DIPLOMA IN PRINTING MANAGEMENT (First-years)	01-Mar-21	12-Mar-21
DEPARTMENT: MARKETING		
DIPLOMA IN MARKETING (First-years)	01-Mar-21	12-Mar-21
DIPLOMA IN MARKETING (EXTENDED) (First-years)	01-Mar-21	12-Mar-21
DEPARTMENT: PUBLIC ADMIN & GOVERNANCE		
DIPLOMA IN PUBLIC ADMINISTRATION (First-years)	01-Mar-21	12-Mar-21
DIPLOMA IN PUBLIC ADMINISTRATION AND GOVERNANCE (EXTENDED) (First-years)	01-Mar-21	12-Mar-21

FIRST-YEAR REGISTRATIONS

DISTRICT SIX & MOWBRAY CAMPUSES (DISTRICT SIX CAMPUS ONLINE ASSISTANCE)

ONLINE REGISTRATION PROGRAMMES	REGISTRATION DATES	
	ONLINE START	ONLINE END
DEPARTMENT: RETAIL BUSINESS MANAGEMENT		
DIPLOMA IN RETAIL BUSINESS MANAGEMENT (First-years)	01-Mar-21	12-Mar-21
DEPARTMENT: SPORT MANAGEMENT		
DIPLOMA IN SPORT AND LEISURE MANAGEMENT (First-years)	01-Mar-21	12-Mar-21
DEPARTMENT: TOURISM MANAGEMENT		
DIPLOMA IN EVENT MANAGEMENT (First-years)	01-Mar-21	12-Mar-21
DIPLOMA IN EVENT MANAGEMENT (EXTENDED) (First-years)	01-Mar-21	12-Mar-21
DIPLOMA IN TOURISM MANAGEMENT (First-years)	01-Mar-21	12-Mar-21
DIPLOMA IN TOURISM MANAGEMENT (EXTENDED) (First-years)	01-Mar-21	12-Mar-21
DEPARTMENT: BUSINESS & INFORMATION ADMIN		
DIPLOMA IN BUSINESS AND INFORMATION ADMINISTRATION(First-years)	01-Mar-21	12-Mar-21
DIPLOMA IN BUSINESS AND INFORMATION ADMINISTRATION (EXTENDED) (First-years)	01-Mar-21	12-Mar-21
DEPARTMENT: FINANCIAL ACCOUNTING & TAXATION		
DIPLOMA IN ACCOUNTANCY (First-years)	01-Mar-21	12-Mar-21
DIPLOMA IN ACCOUNTANCY (EXTENDED) (First-years)	01-Mar-21	12-Mar-21
DEPARTMENT: ENTREPRENEURSHIP & BUSINESS MANAGEMENT		
DIPLOMA IN ENTREPRENEURSHIP (First-years)	01-Mar-21	12-Mar-21
DIPLOMA IN ENTREPRENEURSHIP (EXTENDED) (First-years)	01-Mar-21	12-Mar-21
UNIT FOR APPLIED ECONOMICS		
DIPLOMA IN REAL ESTATE (DISTANCE EDUCATION) - (First-years)	01-Mar-21	12-Mar-21
DIPLOMA IN REAL ESTATE (First-years)	01-Mar-21	12-Mar-21

REGISTRATION TIME: 09:00 – 15:00 (online assistance)

Students who require off-campus assistance can contact the Call Centre or visit the following link for detailed contact information: <https://www.cput.ac.za/enquiries>

NOTE: Due to the COVID-19 pandemic, students will only be able to do their registration online; and only off-campus assistance will be possible.

OTHER LEVELS OF STUDYING REGISTRATIONS**DISTRICT SIX & MOWBRAY CAMPUSES (DISTRICT SIX CAMPUS ONLINE ASSISTANCE)**

ONLINE REGISTRATION PROGRAMMES	REGISTRATION DATES	
	ONLINE START	ONLINE END
DEPARTMENT: GRADUATE CENTRE FOR MANAGEMENT		
B TECH: BUSINESS ADMINISTRATION (Phased Out - Senior Students Only)	11-Jan-21	05-Feb-21
M TECH: BUSINESS ADMINISTRATION (COURSE WORK) (Phased Out - Senior Students Only)	11-Jan-21	05-Feb-21
M TECH: BUSINESS ADMINISTRATION (Phased Out - Senior Students Only)	11-Jan-21	05-Feb-21
M TECH: BUSINESS INFORMATION SYSTEMS (COURSE BASED) (Phased Out - Senior Students Only)	11-Jan-21	05-Feb-21
M TECH: BUSINESS INFORMATION SYSTEMS (Phased Out - Senior Students Only)	11-Jan-21	05-Feb-21
DEPARTMENT: HUMAN RESOURCE MANAGEMENT		
ND: HUMAN RESOURCES MANAGEMENT (Phased Out - Senior Students Only)	12-Jan-21	05-Feb-21
ND: HUMAN RESOURCES MANAGEMENT (EXTENDED) (Phased Out - Senior Students Only)	12-Jan-21	05-Feb-21
DIPLOMA IN HUMAN RESOURCE MANAGEMENT (Senior Students)	12-Jan-21	05-Feb-21
DIPLOMA IN HUMAN RESOURCE MANAGEMENT (EXTENDED) (Senior Students)	12-Jan-21	05-Feb-21
B TECH: HUMAN RESOURCE DEVELOPMENT (Phased Out - Senior Students Only)	11-Jan-21	05-Feb-21
B TECH: HUMAN RESOURCES MANAGEMENT (Phased Out - Senior Students Only)	11-Jan-21	05-Feb-21
ADVANCED DIPLOMA IN HUMAN RESOURCE DEVELOPMENT	11-Jan-21	05-Feb-21
ADVANCED DIPLOMA IN HUMAN RESOURCE MANAGEMENT	11-Jan-21	05-Feb-21
M TECH: HUMAN RESOURCE MANAGEMENT (COURSE BASED) (Phased Out - Senior Students Only)	11-Jan-21	05-Feb-21
M TECH: HUMAN RESOURCES MANAGEMENT (Phased Out - Senior Students Only)	11-Jan-21	05-Feb-21

OTHER LEVELS OF STUDYING REGISTRATIONS

DISTRICT SIX & MOWBRAY CAMPUSES (DISTRICT SIX CAMPUS ONLINE ASSISTANCE)

ONLINE REGISTRATION PROGRAMMES	REGISTRATION DATES	
	ONLINE START	ONLINE END
DEPARTMENT: HUMAN RESOURCE MANAGEMENT (Cntd.)		
MASTER OF HUMAN RESOURCE MANAGEMENT (New Students)	11-Jan-21	31-May-21
MASTER OF HUMAN RESOURCE MANAGEMENT (Returning Students)	11-Jan-21	05-Feb-21
D TECH: HUMAN RESOURCES MANAGEMENT (Phased Out - Senior Students Only)	11-Jan-21	05-Feb-21
DOCTOR OF HUMAN RESOURCE MANAGEMENT (New Students)	11-Jan-21	31-May-21
DOCTOR OF HUMAN RESOURCE MANAGEMENT (Returning Students)	11-Jan-21	05-Feb-21
DEPARTMENT: MANAGEMENT & PROJECT MANAGEMENT		
ND: MANAGEMENT (Phased Out - Senior Students Only)	12-Jan-21	05-Feb-21
ND: MANAGEMENT (EXTENDED) (Phased Out - Senior Students Only)	12-Jan-21	05-Feb-21
ND: PRINTING MANAGEMENT (Phased Out - Senior Students Only)	12-Jan-21	05-Feb-21
DIPLOMA IN MANAGEMENT (Senior Students)	12-Jan-21	05-Feb-21
DIPLOMA IN MANAGEMENT (EXTENDED) (Senior Students)	12-Jan-21	05-Feb-21
DIPLOMA IN PRINTING MANAGEMENT (Senior Students)	12-Jan-21	05-Feb-21
B TECH: MANAGEMENT (Phased Out - Senior Students Only)	11-Jan-21	05-Feb-21
B TECH: PROJECT MANAGEMENT (Phased Out - Senior Students Only)	11-Jan-21	05-Feb-21
ADVANCED DIPLOMA IN MANAGEMENT		
ADVANCED DIPLOMA IN PROJECT MANAGEMENT	11-Jan-21	05-Feb-21
M TECH: BUSINESS ADMINISTRATION IN PROJECT MANAGEMENT (Phased Out - Senior Students Only)	11-Jan-21	05-Feb-21
DEPARTMENT: PUBLIC ADMIN & GOVERNANCE		
MASTER OF PUBLIC ADMINISTRATION (New Students)	11-Jan-21	31-May-21
MASTER OF PUBLIC ADMINISTRATION (Returning Students)	11-Jan-21	05-Feb-21

FACULTY OF BUSINESS & MANAGEMENT SCIENCES

OTHER LEVELS OF STUDYING REGISTRATIONS

DISTRICT SIX & MOWBRAY CAMPUSES (DISTRICT SIX CAMPUS ONLINE ASSISTANCE)

ONLINE REGISTRATION PROGRAMMES	REGISTRATION DATES	
	ONLINE START	ONLINE END
DEPARTMENT: MARKETING		
ND: MARKETING (Phased Out - Senior Students Only)	12-Jan-21	05-Feb-21
ND: MARKETING (EXTENDED) (Phased Out - Senior Students Only)	12-Jan-21	05-Feb-21
DIPLOMA IN MARKETING (Senior Students)	12-Jan-21	05-Feb-21
DIPLOMA IN MARKETING (EXTENDED) (Senior Students)	12-Jan-21	05-Feb-21
B TECH: MARKETING (Phased Out - Senior Students Only)	11-Jan-21	05-Feb-21
ADVANCED DIPLOMA IN MARKETING	11-Jan-21	05-Feb-21
M TECH: MARKETING (COURSE BASED) (Phased Out - Senior Students Only)	11-Jan-21	05-Feb-21
M TECH: MARKETING (Phased Out - Senior Students Only)	11-Jan-21	05-Feb-21
MASTER OF MARKETING (NEW STUDENTS)		
MASTER OF MARKETING (Returning Students)	11-Jan-21	05-Feb-21
D TECH: MARKETING (Phased Out - Senior Students Only)	11-Jan-21	05-Feb-21
DOCTOR OF COMMERCE IN MARKETING (New Students)	11-Jan-21	31-May-21
DOCTOR OF COMMERCE IN MARKETING (Returning Students)	11-Jan-21	05-Feb-21
DEPARTMENT: PUBLIC ADMIN & GOVERNANCE		
ND: PUBLIC MANAGEMENT (Phased Out - Senior Students Only)	12-Jan-21	05-Feb-21
ND: PUBLIC MANAGEMENT (EXTENDED) (Phased Out - Senior Students Only)	12-Jan-21	05-Feb-21
DIPLOMA IN PUBLIC ADMINISTRATION (Senior Students)	12-Jan-21	05-Feb-21
DIPLOMA IN PUBLIC ADMINISTRATION AND GOVERNANCE (EXTENDED) (Senior Students)	12-Jan-21	05-Feb-21
B TECH: PUBLIC MANAGEMENT (Phased Out - Senior Students Only)	11-Jan-21	05-Feb-21
ADVANCED DIPLOMA IN PUBLIC ADMINISTRATION	11-Jan-21	05-Feb-21
M TECH: PUBLIC MANAGEMENT (COURSE BASED) (Phased Out - Senior Students Only)	11-Jan-21	05-Feb-21

OTHER LEVELS OF STUDYING REGISTRATIONS

DISTRICT SIX & MOWBRAY CAMPUSES (DISTRICT SIX CAMPUS ONLINE ASSISTANCE)

ONLINE REGISTRATION PROGRAMMES	REGISTRATION DATES	
	ONLINE START	ONLINE END
DEPARTMENT: PUBLIC ADMIN & GOVERNANCE (Cntd.)		
M TECH: PUBLIC MANAGEMENT (Phased Out - Senior Students Only)	11-Jan-21	05-Feb-21
MASTER OF PUBLIC ADMINISTRATION (New Students)	11-Jan-21	31-May-21
MASTER OF PUBLIC ADMINISTRATION (Returning Students)	11-Jan-21	05-Feb-21
D TECH: PUBLIC MANAGEMENT (Phased Out - Senior Students Only)	11-Jan-21	05-Feb-21
DOCTOR OF PUBLIC ADMINISTRATION (New Students)	11-Jan-21	31-May-21
DOCTOR OF PUBLIC ADMINISTRATION (Returning Students)	11-Jan-21	05-Feb-21
DEPARTMENT: RETAIL BUSINESS MANAGEMENT		
ND: RETAIL BUSINESS MANAGEMENT (Phased Out - Senior Students Only)	12-Jan-21	05-Feb-21
DIPLOMA IN RETAIL BUSINESS MANAGEMENT (Senior Students)	12-Jan-21	05-Feb-21
B TECH: RETAIL BUSINESS MANAGEMENT (Phased Out - Senior Students Only)	11-Jan-21	05-Feb-21
ADVANCED DIPLOMA IN RETAIL BUSINESS MANAGEMENT	11-Jan-21	05-Feb-21
M TECH: RETAIL BUSINESS MANAGEMENT (Phased Out - Senior Students Only)	11-Jan-21	05-Feb-21
MASTER OF RETAIL BUSINESS MANAGEMENT (New Students)	11-Jan-21	31-May-21
MASTER OF RETAIL BUSINESS MANAGEMENT (Returning Students)	11-Jan-21	05-Feb-21
DEPARTMENT: SPORT MANAGEMENT		
ND: SPORT MANAGEMENT (Phased Out - Senior Students Only)	12-Jan-21	05-Feb-21
ND: SPORT MANAGEMENT (EXTENDED) (Phased Out - Senior Students Only)	12-Jan-21	05-Feb-21
DIPLOMA IN SPORT AND LEISURE MANAGEMENT (Senior Students)	12-Jan-21	05-Feb-21
B TECH: SPORT MANAGEMENT (Phased Out - Senior Students Only)	11-Jan-21	05-Feb-21
M TECH: SPORT MANAGEMENT (Phased Out - Senior Students Only)	11-Jan-21	05-Feb-21
MASTER OF SPORT MANAGEMENT (New Students)	11-Jan-21	31-May-21
MASTER OF SPORT MANAGEMENT (Returning Students)	11-Jan-21	05-Feb-21

FACULTY OF BUSINESS & MANAGEMENT SCIENCES

OTHER LEVELS OF STUDYING REGISTRATIONS

DISTRICT SIX & MOWBRAY CAMPUSES (DISTRICT SIX CAMPUS ONLINE ASSISTANCE)

ONLINE REGISTRATION PROGRAMMES	REGISTRATION DATES	
	ONLINE START	ONLINE END
DEPARTMENT: TOURISM MANAGEMENT		
ND: EVENT MANAGEMENT (Phased Out - Senior Students Only)	12-Jan-21	05-Feb-21
ND: EVENT MANAGEMENT (EXTENDED) (Phased Out - Senior Students Only)	12-Jan-21	05-Feb-21
ND: TOURISM MANAGEMENT (Phased Out - Senior Students Only)	12-Jan-21	05-Feb-21
ND: TOURISM MANAGEMENT (EXTENDED) (Phased Out - Senior Students Only)	12-Jan-21	05-Feb-21
DIPLOMA IN EVENT MANAGEMENT (Senior Students)	12-Jan-21	05-Feb-21
DIPLOMA IN EVENT MANAGEMENT (EXTENDED) (Senior Students)	12-Jan-21	05-Feb-21
DIPLOMA IN TOURISM MANAGEMENT (Senior Students)	12-Jan-21	05-Feb-21
DIPLOMA IN TOURISM MANAGEMENT (EXTENDED) (Senior Students)	12-Jan-21	05-Feb-21
B TECH: TOURISM MANAGEMENT IN EVENT MANAGEMENT (Phased Out - Senior Students Only)	11-Jan-21	05-Feb-21
B TECH: TOURISM MANAGEMENT (Phased Out - Senior Students Only)	11-Jan-21	05-Feb-21
ADVANCED DIPLOMA IN EVENT MANAGEMENT	11-Jan-21	05-Feb-21
ADVANCED DIPLOMA IN TOURISM MANAGEMENT	11-Jan-21	05-Feb-21
M TECH: TOURISM AND HOSPITALITY MANAGEMENT (COURSE BASED) (Phased Out - Senior Students Only)	11-Jan-21	05-Feb-21
M TECH: TOURISM AND HOSPITALITY MANAGEMENT (Phased Out - Senior Students Only)	11-Jan-21	05-Feb-21
D TECH: TOURISM AND HOSPITALITY MANAGEMENT (Phased Out - Senior Students Only)	11-Jan-21	05-Feb-21
DEPARTMENT: BUSINESS & INFORMATION ADMIN		
ND: OFFICE MANAGEMENT AND TECHNOLOGY (Phased Out - Senior Students Only)	12-Jan-21	05-Feb-21
ND: OFFICE MANAGEMENT AND TECHNOLOGY (EXTENDED) (Phased Out - Senior Students Only)	12-Jan-21	05-Feb-21
DIPLOMA IN BUSINESS AND INFORMATION ADMINISTRATION (Senior Students)	12-Jan-21	05-Feb-21

OTHER LEVELS OF STUDYING REGISTRATIONS

DISTRICT SIX & MOWBRAY CAMPUSES (DISTRICT SIX CAMPUS ONLINE ASSISTANCE)

ONLINE REGISTRATION PROGRAMMES	REGISTRATION DATES	
	ONLINE START	ONLINE END
DEPARTMENT: BUSINESS & INFORMATION ADMIN (Cntd.)		
DIPLOMA IN BUSINESS AND ADMINISTRATION (EXTENDED) (Senior Students)	12-Jan-21	05-Feb-21
B TECH: OFFICE MANAGEMENT AND TECHNOLOGY (Phased Out - Senior Students Only)	11-Jan-21	05-Feb-21
ADVANCED DIPLOMA IN BUSINESS AND INFORMATION ADMINISTRATION	11-Jan-21	05-Feb-21
M TECH: OFFICE MANAGEMENT AND TECHNOLOGY (Phased Out - Senior Students Only)	11-Jan-21	05-Feb-21
MASTER OF BUSINESS AND INFORMATION ADMINISTRATION (New Students)	11-Jan-21	31-May-21
MASTER OF BUSINESS AND INFORMATION ADMINISTRATION (Returning Students)	11-Jan-21	05-Feb-21
D TECH: OFFICE MANAGEMENT AND TECHNOLOGY (Phased Out - Senior Students Only)	11-Jan-21	05-Feb-21
DEPARTMENT: FINANCIAL ACCOUNTING & TAXATION		
NHC: ACCOUNTANCY (Phased Out - Senior Students Only)	12-Jan-21	05-Feb-21
NHC: ACCOUNTANCY (EXTENDED) (Phased Out - Senior Students Only)	12-Jan-21	05-Feb-21
ND: ACCOUNTING (Phased Out - Senior Students Only)	12-Jan-21	05-Feb-21
DIPLOMA IN ACCOUNTANCY (Senior Students)	12-Jan-21	05-Feb-21
DIPLOMA IN ACCOUNTANCY (EXTENDED) (Senior Students)	12-Jan-21	05-Feb-21
B TECH: TAXATION (Phased Out - Senior Students Only)	11-Jan-21	05-Feb-21
DEPARTMENT: MANAGEMENT ACCOUNTING		
ND: COST AND MANAGEMENT ACCOUNTING (Phased Out - Senior Students Only)	12-Jan-21	05-Feb-21
B TECH: COST AND MANAGEMENT ACCOUNTING (Phased Out - Senior Students Only)	12-Jan-21	05-Feb-21
M TECH: COST AND MANAGEMENT ACCOUNTING (Phased Out - Senior Students Only)	11-Jan-21	05-Feb-21
MASTER OF MANAGEMENT ACCOUNTING (New Students)	11-Jan-21	31-May-21
MASTER OF MANAGEMENT ACCOUNTING (Returning Students)	11-Jan-21	05-Feb-21

FACULTY OF BUSINESS & MANAGEMENT SCIENCES

OTHER LEVELS OF STUDYING REGISTRATIONS

DISTRICT SIX & MOWBRAY CAMPUSES (DISTRICT SIX CAMPUS ONLINE ASSISTANCE)

ONLINE REGISTRATION PROGRAMMES	REGISTRATION DATES	
	ONLINE START	ONLINE END
DEPARTMENT: INTERNAL AUDITING & INFORMATION SYSTEMS		
NHC: FINANCIAL INFORMATION SYSTEMS (Phased Out - Senior Students Only)	12-Jan-21	05-Feb-21
ND: FINANCIAL INFORMATION SYSTEMS (Phased Out - Senior Students Only)	12-Jan-21	05-Feb-21
ND: INTERNAL AUDITING (Phased Out - Senior Students Only)	12-Jan-21	05-Feb-21
B TECH: FINANCIAL INFORMATION SYSTEMS (Phased Out - Senior Students Only)	11-Jan-21	05-Feb-21
B TECH: INTERNAL AUDITING (Phased Out - Senior Students Only)	11-Jan-21	05-Feb-21
M TECH: INTERNAL AUDITING (Phased Out - Senior Students Only)	11-Jan-21	05-Feb-21
MASTER OF INTERNAL AUDITING (New Students)	11-Jan-21	31-May-21
MASTER OF INTERNAL AUDITING (Returning Students)	11-Jan-21	05-Feb-21
D Tech: INTERNAL AUDITING (Phased Out - Senior Students Only)	11-Jan-21	05-Feb-21
DOCTOR OF COMMERCE IN INTERNAL AUDITING (New Students)	11-Jan-21	31-May-21
DOCTOR OF COMMERCE IN INTERNAL AUDITING (Returning Students)	11-Jan-21	05-Feb-21
DEPARTMENT: ENTREPRENEURSHIP & BUSINESS MANAGEMENT		
ND: ENTREPRENEURSHIP (Phased Out - Senior Students Only)	12-Jan-21	05-Feb-21
ND: ENTREPRENEURSHIP (EXTENDED) (Phased Out - Senior Students Only)	12-Jan-21	05-Feb-21
DIPLOMA IN ENTREPRENEURSHIP(Senior Students)	12-Jan-21	05-Feb-21
DIPLOMA IN ENTREPRENEURSHIP (EXTENDED)(Senior Students)	12-Jan-21	05-Feb-21
ADVANCED DIPLOMA IN ENTREPRENEURSHIP	11-Jan-21	05-Feb-21
B TECH: MANAGEMENT IN ENTREPRENEURSHIP (Phased Out - Senior Students Only)	11-Jan-21	05-Feb-21
M TECH: BUSINESS ADMINISTRATION (ENTREPRENEURSHIP) (Phased Out - Senior Students Only)	11-Jan-21	05-Feb-21

OTHER LEVELS OF STUDYING REGISTRATIONS

DISTRICT SIX & MOWBRAY CAMPUSES (DISTRICT SIX CAMPUS ONLINE ASSISTANCE)

ONLINE REGISTRATION PROGRAMMES	REGISTRATION DATES	
	ONLINE START	ONLINE END
UNIT FOR APPLIED ECONOMICS		
ND: REAL ESTATE (DISTANCE EDUCATION) (Phased Out - Senior Students Only)	12-Jan-21	05-Feb-21
ND: REAL ESTATE (Phased Out - Senior Students Only)	12-Jan-21	05-Feb-21
DIPLOMA IN REAL ESTATE (DISTANCE EDUCATION) (Senior Students)	12-Jan-21	05-Feb-21
DIPLOMA IN REAL ESTATE (Senior Students)	12-Jan-21	05-Feb-21
DIPLOMA IN REAL ESTATE (Part-Time Phased Out - Senior Students Only)	12-Jan-21	05-Feb-21

DISTRICT SIX & MOWBRAY CAMPUSES (PROGRAMMES NOT FOR ONLINE REGISTRATIONS)

MANUAL REGISTRATION PROGRAMMES (NOT FOR ONLINE REGISTRATION)

****PLEASE FOLLOW THE OFF-CAMPUS MANUAL REGISTRATION PROCESS OUTLINED IN THE REGISTRATION BOOKLET****

ALL DEPARTMENTS

NON-DEGREE PURPOSES ONLY

FACULTY OF BUSINESS & MANAGEMENT SCIENCES

FIRST-YEAR REGISTRATIONS

REGISTRATION TIME: 09:00 – 15:00 (online assistance)

Note: Due to the COVID-19 pandemic, only off-campus assistance and registrations will be possible.

Students who require off-campus assistance can contact the Call Centre or visit the following link for detailed contact information: <https://www.cput.ac.za/enquiries>

Students who wrote their Final Grade 12 Exams in 2019 (or earlier), and have final acceptance, can register from as early as 1 March 2021 until 12 March 2021.

Final evaluation (screening) of the 2020 NSC results will be conducted from 1–5 March 2021. Any NSC results obtained will be verified against the official results as published by the Department of Basic Education and Training. Acceptance will be confirmed via an automated sms to your cell phone number provided during your application. Also frequently track your acceptance status via the link <http://www.cput.ac.za/study/track>. This site updates status immediately if any changes are made, so gives the latest information.

Please commence with registration immediately after final acceptance.

GRANGER BAY CAMPUS

ONLINE REGISTRATION PROGRAMMES	REGISTRATION DATES	
	ONLINE START	ONLINE END
DEPARTMENT: CAPE TOWN HOTEL SCHOOL		
DIPLOMA IN HOSPITALITY AND FOOD AND BEVERAGE MANAGEMENT (First-years)	01-Mar-21	12-Mar-21
DIPLOMA IN HOSPITALITY AND PROFESSIONAL COOKERY (First-years)	01-Mar-21	12-Mar-21
DIPLOMA IN HOSPITALITY AND HOTEL MANAGEMENT (First-years)	01-Mar-21	12-Mar-21

FACULTY OF BUSINESS & MANAGEMENT SCIENCES

REGISTRATION TIME: 09:00 – 15:00 (online assistance)

Students who require off-campus assistance can contact the Call Centre or visit the following link for detailed contact information: <https://www.cput.ac.za/enquiries>

NOTE: Due to the COVID-19 pandemic, students will only be able to do their registration online; and only off-campus assistance will be possible.

OTHER LEVELS OF STUDYING REGISTRATIONS

GRANGER BAY CAMPUS

ONLINE REGISTRATION PROGRAMMES	REGISTRATION DATES	
	ONLINE START	ONLINE END
DEPARTMENT: CAPE TOWN HOTEL SCHOOL		
ND: HOSPITALITY MANAGEMENT: ACCOMMODATION (Phased Out - Senior Students Only)	12-Jan-21	05-Feb-21
ND: HOSPITALITY MANAGEMENT: PROFESSIONAL COOKERY (Phased Out - Senior Students Only)	12-Jan-21	05-Feb-21
ND: HOSPITALITY MANAGEMENT: FOOD AND BEVERAGE (Phased Out - Senior Students Only)	12-Jan-21	05-Feb-21
DIPLOMA IN HOSPITALITY AND FOOD AND BEVERAGE MANAGEMENT (Senior Students)	12-Jan-21	05-Feb-21
DIPLOMA IN HOSPITALITY AND PROFESSIONAL COOKERY (Senior Students)	12-Jan-21	05-Feb-21
DIPLOMA IN HOSPITALITY AND HOTEL MANAGEMENT (Senior Students)	12-Jan-21	05-Feb-21
B TECH: HOSPITALITY MANAGEMENT (Phased Out - Senior Students Only)	11-Jan-21	05-Feb-21
ADVANCED DIPLOMA IN HOSPITALITY AND FOOD AND BEVERAGE MANAGEMENT	11-Jan-21	05-Feb-21
ADVANCED DIPLOMA IN HOSPITALITY AND HOTEL MANAGEMENT	11-Jan-21	05-Feb-21
ADVANCED DIPLOMA IN HOSPITALITY AND PROFESSIONAL COOKERY	11-Jan-21	05-Feb-21
M TECH: FOOD & BEVERAGE MANAGEMENT (Phased Out - Senior Students Only)	11-Jan-21	05-Feb-21

GRANGER BAY CAMPUS (PROGRAMMES NOT FOR ONLINE REGISTRATIONS)**MANUAL REGISTRATION PROGRAMMES (NOT FOR ONLINE REGISTRATION)**

****PLEASE FOLLOW THE OFF-CAMPUS MANUAL REGISTRATION PROCESS OUTLINED IN THE REGISTRATION BOOKLET****

DEPARTMENT: CAPE TOWN HOTEL SCHOOL

NON-DEGREE PURPOSES ONLY

FACULTY OF BUSINESS & MANAGEMENT SCIENCES

FIRST-YEAR REGISTRATIONS

REGISTRATION TIME: 09:00 – 15:00 (online assistance)

Note: Due to the COVID-19 pandemic, only off-campus assistance and registrations will be possible.

Students who require off-campus assistance can contact the Call Centre or visit the following link for detailed contact information: <https://www.cput.ac.za/enquiries>

Students who wrote their Final Grade 12 Exams in 2019 (or earlier), and have final acceptance, can register from as early as 1 March 2021 until 12 March 2021.

Final evaluation (screening) of the 2020 NSC results will be conducted from 1–5 March 2021. Any NSC results obtained will be verified against the official results as published by the Department of Basic Education and Training. Acceptance will be confirmed via an automated sms to your cell phone number provided during your application. Also frequently track your acceptance status via the link <http://www.cput.ac.za/study/track>. This site updates status immediately if any changes are made, so gives the latest information.

Please commence with registration immediately after final acceptance.

WELLINGTON CAMPUS

ONLINE REGISTRATION PROGRAMMES	REGISTRATION DATES	
	ONLINE START	ONLINE END
DEPARTMENT: TOURISM MANAGEMENT		
DIPLOMA IN TOURISM MANAGEMENT (First-years)	01-Mar-21	12-Mar-21
DEPARTMENT: BUSINESS & INFORMATION ADMIN		
DIPLOMA IN BUSINESS AND INFORMATION ADMINISTRATION (First-years)	01-Mar-21	12-Mar-21
DEPARTMENT: FINANCIAL ACCOUNTING & TAXATION		
DIPLOMA IN ACCOUNTANCY (First-years)	01-Mar-21	12-Mar-21

FACULTY OF BUSINESS & MANAGEMENT SCIENCES

REGISTRATION TIME: 09:00 – 15:00 (online assistance)

Students who require off-campus assistance can contact the Call Centre or visit the following link for detailed contact information: <https://www.cput.ac.za/enquiries>

NOTE: Due to the COVID-19 pandemic, students will only be able to do their registration online; and only off-campus assistance will be possible.

OTHER LEVELS OF STUDYING REGISTRATIONS

WELLINGTON CAMPUS

ONLINE REGISTRATION PROGRAMMES	REGISTRATION DATES	
	ONLINE START	ONLINE END
DEPARTMENT: SPORT MANAGEMENT		
ND: SPORT MANAGEMENT (Phased Out - Senior Students Only)	12-Jan-21	05-Feb-21
DEPARTMENT: TOURISM MANAGEMENT		
ND: TOURISM MANAGEMENT (Phased Out - Senior Students Only)	12-Jan-21	05-Feb-21
DIPLOMA IN TOURISM MANAGEMENT (Senior Students)	12-Jan-21	05-Feb-21
DEPARTMENT: BUSINESS & INFORMATION ADMIN		
ND: OFFICE MANAGEMENT AND TECHNOLOGY (Phased Out - Senior Students Only)	12-Jan-21	05-Feb-21
DIPLOMA IN BUSINESS AND INFORMATION ADMINISTRATION (Senior Students)	12-Jan-21	05-Feb-21
DEPARTMENT: FINANCIAL ACCOUNTING & TAXATION		
DIPLOMA IN ACCOUNTANCY (Senior Students)	12-Jan-21	05-Feb-21
NHC: ACCOUNTANCY (Phased Out - Senior Students Only)	12-Jan-21	05-Feb-21
DEPARTMENT: MANAGEMENT ACCOUNTING		
ND: COST AND MANAGEMENT ACCOUNTING (Phased Out - Senior Students Only)	12-Jan-21	05-Feb-21
DEPARTMENT: INTERNAL AUDITING & INFORMATION SYSTEMS		
ND: INTERNAL AUDITING (Phased out - Senior students only)	12-Jan-21	05-Feb-21

FACULTY OF BUSINESS & MANAGEMENT SCIENCES

WELLINGTON (PROGRAMMES NOT FOR ONLINE REGISTRATIONS)

MANUAL REGISTRATION PROGRAMMES (NOT FOR ONLINE REGISTRATION)

****PLEASE FOLLOW THE OFF-CAMPUS MANUAL REGISTRATION PROCESS OUTLINED IN THE REGISTRATION BOOKLET****

ALL DEPARTMENTS

NON-DEGREE PURPOSES ONLY



FACULTY OF EDUCATION

FIRST-YEAR REGISTRATIONS

REGISTRATION TIME: 09:00 – 15:00 (online assistance)

Note: Due to the COVID-19 pandemic, only off-campus assistance and registrations will be possible.

Students who require off-campus assistance can contact the Call Centre or visit the following link for detailed contact information: <https://www.cput.ac.za/enquiries>

Students who wrote their Final Grade 12 Exams in 2019 (or earlier), and have final acceptance, can register from as early as 1 March 2021 until 12 March 2021.

Final evaluation (screening) of the 2020 NSC results will be conducted from 1–5 March 2021. Any NSC results obtained will be verified against the official results as published by the Department of Basic Education and Training. Acceptance will be confirmed via an automated sms to your cell phone number provided during your application. Also frequently track your acceptance status via the link <http://www.cput.ac.za/study/track>. This site updates status immediately if any changes are made, so gives the latest information.

Please commence with registration immediately after final acceptance.

MOWBRAY CAMPUS

ONLINE REGISTRATION PROGRAMMES	REGISTRATION DATES	
	ONLINE START	ONLINE END
DEPARTMENT: GENERAL EDUCATION & TRAINING - GET		
DIPLOMA IN GRADE R TEACHING (First-years)	01-Mar-21	15-Mar-21
DEPARTMENT: SENIOR PHASE AND FET STUDIES		
B ED IN SENIOR PHASE AND FET TEACHING (First-years)	01-Mar-21	15-Mar-21
DEPARTMENT: FOUNDATION PHASE STUDIES		
B ED FOUNDATION PHASE TEACHING (First-years)	01-Mar-21	15-Mar-21
DEPARTMENT: INTERMEDIATE PHASE STUDIES		
B ED INTERMEDIATE PHASE TEACHING (First-years)	01-Mar-21	15-Mar-21

FACULTY OF EDUCATION

REGISTRATION TIME: 09:00 – 15:00 (online assistance)

Students who require off-campus assistance can contact the Call Centre or visit the following link for detailed contact information: <https://www.cput.ac.za/enquiries>

NOTE: Due to the COVID-19 pandemic, students will only be able to do their registration online; and only off-campus assistance will be possible.

OTHER LEVELS OF STUDYING REGISTRATIONS

MOWBRAY CAMPUS

ONLINE REGISTRATION PROGRAMMES	REGISTRATION DATES	
	ONLINE START	ONLINE END
DEPARTMENT: POSTGRADUATE STUDIES & RESEARCH		
B ED HONOURS IN EDUCATIONAL MANAGEMENT AND LEADERSHIP	11-Jan-21	05-Feb-21
B ED HONOURS IN TEACHING AND LEARNING	11-Jan-21	05-Feb-21
MASTERS IN EDUCATION (THESIS) (Phased out - Senior Students only)	11-Jan-21	15-Mar-21
MASTER OF EDUCATION (New Students)	11-Jan-21	31-May-21
MASTER OF EDUCATION (Returning Students)	11-Jan-21	15-Mar-21
DOCTORATE IN EDUCATION (Phased out - Senior Students only)	11-Jan-21	15-Mar-21
DOCTOR OF EDUCATION (New Students)	11-Jan-21	31-May-21
DOCTOR OF EDUCATION (Returning Students)	11-Jan-21	15-Mar-21
DEPARTMENT: FURTHER EDUCATION & TRAINING - FET		
B ED: (FET): ECONOMIC AND MANAGEMENT SCIENCE (Phased out - Senior Students only)	18-Jan-21	29-Jan-21
B ED: SPECIALISATION (Phased out - Senior Students only)	18-Jan-21	29-Jan-21
B ED (FET) SPECIALISATION (Phased out - Senior Students only)	18-Jan-21	29-Jan-21
DEPARTMENT: GENERAL EDUCATION & TRAINING - GET		
B ED (GET) FOUNDATION PHASE (Phased out - Senior Students only)	11-Jan-21	29-Jan-21
B ED (GET) INTERMEDIATE AND SENIOR PHASE (Phased out - Senior Students only)	11-Jan-21	29-Jan-21
DIPLOMA IN GRADE R TEACHING (Senior Students)	11-Jan-21	29-Jan-21

OTHER LEVELS OF STUDYING REGISTRATIONS

MOWBRAY CAMPUS

ONLINE REGISTRATION PROGRAMMES	REGISTRATION DATES	
	ONLINE START	ONLINE END
DEPARTMENT: TEACHER PROFESSIONAL DEVELOPMENT		
POSTGRADUATE CERTIFICATE IN EDUCATION IN FURTHER EDUCATION AND TRAINING TEACHING	11-Jan-21	05-Feb-21
ADVANCED DIPLOMA IN TECHNICAL AND VOCATIONAL TEACHING	11-Jan-21	05-Feb-21
DEPARTMENT: SENIOR PHASE AND FET STUDIES		
B ED IN SENIOR PHASE AND FET TEACHING (Senior Students)	11-Jan-21	29-Jan-21
DEPARTMENT: FOUNDATION PHASE STUDIES		
B ED FOUNDATION PHASE TEACHING (Senior Students)	11-Jan-21	29-Jan-21
DEPARTMENT: INTERMEDIATE PHASE STUDIES		
B ED INTERMEDIATE PHASE TEACHING (Senior Students)	11-Jan-21	29-Jan-21

FACULTY OF EDUCATION

FIRST-YEAR REGISTRATIONS

REGISTRATION TIME: 09:00 – 15:00 (online assistance)

Note: Due to the COVID-19 pandemic, only off-campus assistance and registrations will be possible.

Students who require off-campus assistance can contact the Call Centre or visit the following link for detailed contact information: <https://www.cput.ac.za/enquiries>

Students who wrote their Final Grade 12 Exams in 2019 (or earlier), and have final acceptance, can register from as early as 1 March 2021 until 12 March 2021.

Final evaluation (screening) of the 2020 NSC results will be conducted from 1–5 March 2021. Any NSC results obtained will be verified against the official results as published by the Department of Basic Education and Training. Acceptance will be confirmed via an automated sms to your cell phone number provided during your application. Also frequently track your acceptance status via the link <http://www.cput.ac.za/study/track>. This site updates status immediately if any changes are made, so gives the latest information.

Please commence with registration immediately after final acceptance.

WELLINGTON CAMPUS

ONLINE REGISTRATION PROGRAMMES	REGISTRATION DATES	
	ONLINE START	ONLINE END
DEPARTMENT: GENERAL EDUCATION & TRAINING - GET		
DIPLOMA IN GRADE R TEACHING (First-years)	01-Mar-21	15-Mar-21
DEPARTMENT: SENIOR PHASE AND FET STUDIES		
B ED IN SENIOR PHASE AND FET TEACHING (First-years)	01-Mar-21	15-Mar-21
DEPARTMENT: FOUNDATION PHASE STUDIES		
B ED FOUNDATION PHASE TEACHING (First-years)	01-Mar-21	15-Mar-21
DEPARTMENT: INTERMEDIATE PHASE STUDIES		
B ED INTERMEDIATE PHASE TEACHING (First-years)	01-Mar-21	15-Mar-21

FACULTY OF EDUCATION

REGISTRATION TIME: 09:00 – 15:00 (online assistance)

Students who require off-campus assistance can contact the Call Centre or visit the following link for detailed contact information: <https://www.cput.ac.za/enquiries>

NOTE: Due to the COVID-19 pandemic, students will only be able to do their registration online; and only off-campus assistance will be possible.

OTHER LEVELS OF STUDYING REGISTRATIONS

MOWBRAY CAMPUS

ONLINE REGISTRATION PROGRAMMES	REGISTRATION DATES	
	ONLINE START	ONLINE END
DEPARTMENT: POSTGRADUATE STUDIES & RESEARCH		
B ED (HONOURS): EDUCATIONAL MANAGEMENT (Phased out - Senior Students only)	11-Jan-21	05-Feb-21
B ED HONOURS IN EDUCATIONAL MANAGEMENT AND LEADERSHIP	11-Jan-21	05-Feb-21
B ED HONOURS IN TEACHING AND LEARNING	11-Jan-21	05-Feb-21
DEPARTMENT: FURTHER EDUCATION & TRAINING - FET		
B ED: FET: ECONOMIC AND MANAGEMENT SCIENCES (Phased out - Senior Students only)	11-Jan-21	29-Jan-21
DEPARTMENT: GENERAL EDUCATION & TRAINING - GET		
B ED (GET) FOUNDATION PHASE (Phased out - Senior Students only)	11-Jan-21	29-Jan-21
B ED (GET) INTERMEDIATE AND SENIOR PHASE (Phased out - Senior Students only)	11-Jan-21	29-Jan-21
DIPLOMA IN GRADE R TEACHING (Senior Students)	11-Jan-21	29-Jan-21
DEPARTMENT: SENIOR PHASE AND FET STUDIES		
B ED IN SENIOR PHASE AND FET TEACHING (Senior Students)	11-Jan-21	29-Jan-21
DEPARTMENT: FOUNDATION PHASE STUDIES		
B ED FOUNDATION PHASE TEACHING (Senior Students)	11-Jan-21	29-Jan-21
DEPARTMENT: INTERMEDIATE PHASE STUDIES		
B ED INTERMEDIATE PHASE TEACHING (Senior Students)	11-Jan-21	29-Jan-21

FACULTY OF ENGINEERING AND THE BUILT ENVIRONMENT

FIRST-YEAR REGISTRATIONS

REGISTRATION TIME: 09:00 – 15:00 (online assistance)

Note: Due to the COVID-19 pandemic, only off-campus assistance and registrations will be possible.

Students who require off-campus assistance can contact the Call Centre or visit the following link for detailed contact information: <https://www.cput.ac.za/enquiries>

Students who wrote their Final Grade 12 Exams in 2019 (or earlier), and have final acceptance, can register from as early as 1 March 2021 until 12 March 2021.

Final evaluation (screening) of the 2020 NSC results will be conducted from 1–5 March 2021. Any NSC results obtained will be verified against the official results as published by the Department of Basic Education and Training. Acceptance will be confirmed via an automated sms to your cell phone number provided during your application. Also frequently track your acceptance status via the link <http://www.cput.ac.za/study/track>. This site updates status immediately if any changes are made, so gives the latest information.

Please commence with registration immediately after final acceptance.

BELLVILLE CAMPUS

ONLINE REGISTRATION PROGRAMMES

REGISTRATION DATES

ONLINE START	ONLINE END
--------------	------------

DEPARTMENT: CONSTRUCTION MANAGEMENT & QUANTITY SURVEYING

DIPLOMA IN CONSTRUCTION (First-years)

01-Mar-21

12-Mar-21

DIPLOMA IN CONSTRUCTION (EXTENDED) (First-years)

01-Mar-21

12-Mar-21

DEPARTMENT: CHEMICAL ENGINEERING

DIPLOMA IN CHEMICAL ENGINEERING (First-years)

01-Mar-21

12-Mar-21

DIPLOMA IN CHEMICAL ENGINEERING (EXTENDED) (First-years)

01-Mar-21

12-Mar-21

BACHELOR OF ENG TECH IN CHEMICAL ENG (First-years)

01-Mar-21

12-Mar-21

DEPARTMENT: CIVIL ENGINEERING & SURVEYING

BACHELOR OF ENGINEERING TECHNOLOGY IN CIVIL ENGINEERING (First-years)

01-Mar-21

12-Mar-21

DIPLOMA IN CIVIL ENGINEERING (First-years)

01-Mar-21

12-Mar-21

DIPLOMA IN CIVIL ENGINEERING (EXTENDED) (First-years)

01-Mar-21

12-Mar-21

DIPLOMA IN GEOMATICS (First-years)

01-Mar-21

12-Mar-21

BACHELOR OF GEOMATICS (First-years)

01-Mar-21

12-Mar-21

FIRST-YEAR REGISTRATIONS

BELLVILLE CAMPUS

ONLINE REGISTRATION PROGRAMMES	REGISTRATION DATES	
	ONLINE START	ONLINE END
DEPARTMENT: CLOTHING & TEXTILE TECHNOLOGY		
DIPLOMA IN CLOTHING AND TEXTILE TECHNOLOGY (First-years)	01-Mar-21	12-Mar-21
DIPLOMA IN CLOTHING AND TEXTILE TECHNOLOGY (EXTENDED) (First-years)	01-Mar-21	12-Mar-21
DEPARTMENT: ELECTRICAL, ELECTRONIC & COMPUTER ENGINEERING		
DIPLOMA IN ENGINEERING TECHNOLOGY IN COMPUTER ENGINEERING (First-years)	01-Mar-21	12-Mar-21
DIPLOMA IN ENGINEERING TECHNOLOGY IN ELECTRICAL ENGINEERING (First-years)	01-Mar-21	12-Mar-21
BACHELOR OF ENGINEERING TECH IN COMPUTER ENGINEERING (First-years)	01-Mar-21	12-Mar-21
BACHELOR OF ENGINEERING TECH IN ELECTRICAL ENGINEERING (First-years)	01-Mar-21	12-Mar-21
DEPARTMENT: INDUSTRIAL & SYSTEMS ENGINEERING		
DIPLOMA IN INDUSTRIAL ENGINEERING (First-years)	01-Mar-21	12-Mar-21
DEPARTMENT: MECHANICAL ENGINEERING		
DIPLOMA IN MECHANICAL ENGINEERING (First-years)	01-Mar-21	12-Mar-21
DIPLOMA IN MECHANICAL ENGINEERING (EXTENDED) (First-years)	01-Mar-21	12-Mar-21
DIPLOMA IN MECHANICAL ENGINEERING IN MECHATRONICS (First-years)	01-Mar-21	12-Mar-21

FACULTY OF ENGINEERING AND THE BUILT ENVIRONMENT

REGISTRATION TIME: 09:00 – 15:00 (online assistance)

Students who require off-campus assistance can contact the Call Centre or visit the following link for detailed contact information: <https://www.cput.ac.za/enquiries>

NOTE: Due to the COVID-19 pandemic, students will only be able to do their registration online; and only off-campus assistance will be possible.

OTHER LEVELS OF STUDYING REGISTRATIONS

BELLVILLE CAMPUS

ONLINE REGISTRATION PROGRAMMES	REGISTRATION DATES	
	ONLINE START	ONLINE END
DEPARTMENT: CONSTRUCTION MANAGEMENT & QUANTITY SURVEYING		
BUILDING: NON-DIPLOMA	04-Feb-21	15-Mar-21
DIPLOMA IN CONSTRUCTION (Senior Students)	04-Feb-21	15-Mar-21
DIPLOMA IN CONSTRUCTION (EXTENDED) (Senior Students)	04-Feb-21	15-Mar-21
ADVANCED DIPLOMA IN CONSTRUCTION HEALTH & SAFETY	04-Feb-21	15-Mar-21
ADVANCED DIPLOMA IN CONSTRUCTION MANAGEMENT	04-Feb-21	15-Mar-21
ADVANCED DIPLOMA IN FACILITY MANAGEMENT	04-Feb-21	15-Mar-21
ADVANCED DIPLOMA IN QUANTITY SURVEYING	04-Feb-21	15-Mar-21
MASTER OF CONSTRUCTION (New Students)	11-Jan-21	31-May-21
MASTER OF CONSTRUCTION (Returning Students)	11-Jan-21	15-Mar-21
DEPARTMENT: CHEMICAL ENGINEERING		
CHEMICAL ENGINEERING: NON-DIPLOMA	04-Feb-21	15-Mar-21
ND: ENGINEERING: CHEMICAL (Phased out - Senior Students only)	04-Feb-21	15-Mar-21
ND: ENGINEERING: CHEMICAL (EXTENDED) (Phased out - Senior Students only)	04-Feb-21	15-Mar-21
DIPLOMA IN CHEMICAL ENGINEERING (Senior Students)	04-Feb-21	15-Mar-21
DIPLOMA IN CHEMICAL ENGINEERING (EXTENDED) (Senior Students)	04-Feb-21	15-Mar-21
ADVANCED DIPLOMA IN CHEMICAL ENGINEERING	04-Feb-21	15-Mar-21
B TECH: ENGINEERING: CHEMICAL (Phased out - Senior Students only)	04-Feb-21	15-Mar-21

OTHER LEVELS OF STUDYING REGISTRATIONS

BELLVILLE CAMPUS

ONLINE REGISTRATION PROGRAMMES	REGISTRATION DATES	
	ONLINE START	ONLINE END
DEPARTMENT: CHEMICAL ENGINEERING (Contd.)		
MASTER OF ENGINEERING IN CHEMICAL ENGINEERING (New Students)	11-Jan-21	31-May-21
MASTER OF ENGINEERING IN CHEMICAL ENGINEERING (Returning Students)	11-Jan-21	15-Mar-21
DOCTOR OF ENGINEERING IN CHEMICAL ENGINEERING (New Students)	11-Jan-21	31-May-21
DOCTOR OF ENGINEERING IN CHEMICAL ENGINEERING (Returning Students)	11-Jan-21	15-Mar-21
DEPARTMENT: CIVIL ENGINEERING & SURVEYING		
CIVIL ENGINEERING: NON-DIPLOMA	04-Feb-21	15-Mar-21
ND: ENGINEERING: CIVIL (Phased out - Senior Students only)	04-Feb-21	15-Mar-21
ND: ENGINEERING: CIVIL (EXTENDED) (Phased out - Senior Students only)	04-Feb-21	15-Mar-21
BACHELOR OF ENGINEERING TECHNOLOGY IN CIVIL ENGINEERING (Senior Students)	04-Feb-21	15-Mar-21
DIPLOMA IN CIVIL ENGINEERING (Senior Students)	04-Feb-21	15-Mar-21
DIPLOMA IN CIVIL ENGINEERING (EXTENDED) (Senior Students)	04-Feb-21	15-Mar-21
DIPLOMA IN GEOMATICS (Senior Students)	04-Feb-21	15-Mar-21
BACHELOR OF GEOMATICS (Senior Students)	04-Feb-21	15-Mar-21
B TECH: ENGINEERING : CIVIL (CONSTRUCTION MANAGEMENT) (Phased out - Senior Students only)	04-Feb-21	15-Mar-21
B TECH: ENGINEERING: CIVIL (TRANSPORT) (Phased out - Senior Students only)	04-Feb-21	15-Mar-21
B TECH: ENGINEERING: CIVIL (URBAN ENGINEERING) (Phased out - Senior Students only)	04-Feb-21	15-Mar-21
B TECH: ENGINEERING: CIVIL (WATER) (Phased out - Senior Students only)	04-Feb-21	15-Mar-21
ADVANCED DIPLOMA IN CIVIL ENGINEERING	04-Feb-21	15-Mar-21
MASTER OF ENG IN CIVIL ENGINEERING (New Students)	11-Jan-21	31-May-21
MASTER OF ENG IN CIVIL ENGINEERING (Returning Students)	11-Jan-21	15-Mar-21
DOCTOR OF ENGINEERING IN CIVIL ENGINEERING (New Students)	11-Jan-21	31-May-21
DOCTOR OF ENGINEERING IN CIVIL ENGINEERING (Returning Students)	11-Jan-21	15-Mar-21

FACULTY OF ENGINEERING AND THE BUILT ENVIRONMENT

OTHER LEVELS OF STUDYING REGISTRATIONS

BELLVILLE CAMPUS

ONLINE REGISTRATION PROGRAMMES	REGISTRATION DATES	
	ONLINE START	ONLINE END
DEPARTMENT: CLOTHING & TEXTILE TECHNOLOGY		
CLOTHING MANAGEMENT: NON-DIPLOMA	04-Feb-21	15-Mar-21
DIPLOMA IN CLOTHING AND TEXTILE TECHNOLOGY (Senior Students)	04-Feb-21	15-Mar-21
DIPLOMA IN CLOTHING AND TEXTILE TECHNOLOGY (EXTENDED) (Senior Students)	04-Feb-21	15-Mar-21
ADVANCED DIPLOMA: CLOTHING & TEXTILE TECHNOLOGY	04-Feb-21	15-Mar-21
DEPARTMENT: ELECTRICAL, ELECTRONIC & COMPUTER ENGINEERING		
ELECTRICAL ENGINEERING: NON-DIPLOMA	04-Feb-21	15-Mar-21
ND: ENGINEERING: COMPUTER SYSTEMS (Phased out - Senior Students only)	04-Feb-21	15-Mar-21
ND: ENGINEERING: ELECTRICAL (COMPUTER SYSTEMS) (EXTENDED) (Phased out - Senior Students only)	04-Feb-21	15-Mar-21
ND: ENGINEERING: ELECTRICAL (ELECTRONIC COMMUNICATION) (Phased out - Senior Students only)	04-Feb-21	15-Mar-21
ND: ENGINEERING: ELECTRICAL (CONTROL SYSTEMS) (Phased out - Senior Students only)	04-Feb-21	15-Mar-21
ND: ENGINEERING: ELECTRICAL (INDUSTRIAL) (Phased out - Senior Students only)	04-Feb-21	15-Mar-21
ND: ENGINEERING: ELECTRICAL (INDUSTRIAL) (EXTENDED) (Phased out - Senior Students only)	04-Feb-21	15-Mar-21
ND: ENGINEERING: ELECTRICAL (POWER ELECTRONICS) (Phased out - Senior Students only)	04-Feb-21	15-Mar-21
ND: ENGINEERING: ELECTRICAL (POWER SYSTEMS) (Phased out - Senior Students only)	04-Feb-21	15-Mar-21
ND: ENGINEERING: ELECTRICAL (POWER SYSTEMS) (EXTENDED) (Phased out - Senior Students only)	04-Feb-21	15-Mar-21
DIPLOMA IN ENGINEERING TECHNOLOGY IN COMPUTER ENGINEERING (Senior Students)	04-Feb-21	15-Mar-21
DIPLOMA IN ENGINEERING TECHNOLOGY IN ELECTRICAL ENGINEERING (Senior Students)	04-Feb-21	15-Mar-21
BACHELOR OF ENGINEERING TECH IN COMPUTER ENGINEERING (Senior Students)	04-Feb-21	15-Mar-21

OTHER LEVELS OF STUDYING REGISTRATIONS

BELLVILLE CAMPUS

ONLINE REGISTRATION PROGRAMMES	REGISTRATION DATES	
	ONLINE START	ONLINE END
DEPARTMENT: ELECTRICAL, ELECTRONIC & COMPUTER ENGINEERING (Ontd.)		
BACHELOR OF ENGINEERING TECH IN ELECTRICAL ENGINEERING (Senior Students)	04-Feb-21	15-Mar-21
B TECH: ENGINEERING: ELECTRICAL (ELECTRONIC COMMUNICATION) (Phased out - Senior Students only)	04-Feb-21	15-Mar-21
B TECH: ENGINEERING: ELECTRICAL (COMPUTER SYSTEMS) (Phased out - Senior Students only)	04-Feb-21	15-Mar-21
B TECH: ENGINEERING: ELECTRICAL (CONTROL SYSTEMS) (Phased out - Senior Students only)	04-Feb-21	15-Mar-21
B TECH: ENGINEERING: ELECTRICAL (INDUSTRIAL) (Phased out - Senior Students only)	04-Feb-21	15-Mar-21
B TECH: ENGINEERING: ELECTRICAL (POWER ELECTRONICS) (Phased out - Senior Students only)	04-Feb-21	15-Mar-21
B TECH: ENGINEERING: ELECTRICAL (POWER SYSTEMS) (Phased out - Senior Students only)	04-Feb-21	15-Mar-21
B TECH: ENGINEERING: ELECTRICAL(Phased out - Senior Students only)	04-Feb-21	15-Mar-21
MASTER OF ENGINEERING IN ELECTRICAL ENGINEERING (New Students)	11-Jan-21	31-May-21
MASTER OF ENGINEERING IN ELECTRICAL ENGINEERING (Returning Students)	11-Jan-21	15-Mar-21
MASTER OF ENGINEERING IN ELECTRICAL ENGINEERING IN SMART GRID (COURSE WORK) (SMART GRID) (New Students)	11-Jan-21	15-Mar-21
MASTER OF ENGINEERING IN ELECTRICAL ENGINEERING IN SMART GRID (COURSE WORK) (SMART GRID) (Returning Students)	04-Feb-21	15-Mar-21
MASTER OF ENGINEERING: SATELLITE SYSTEMS & APPLICATIONS (Course Based) (New Students)	11-Jan-21	15-Mar-21
MASTER OF ENGINEERING: SATELLITE SYSTEMS & APPLICATIONS (Course Based) (Returning Students)	04-Feb-21	15-Mar-21
MASTER OF ENGINEERING IN ENERGY (COURSE WORK) (Energy) (New Students)	11-Jan-21	15-Mar-21
MASTER OF ENGINEERING IN ENERGY (COURSE WORK) (Energy) (Returning Students)	11-Jan-21	15-Mar-21
DOCTOR OF ENGINEERING IN ELECTRICAL ENGINEERING (New Students)	11-Jan-21	31-May-21
DOCTOR OF ENGINEERING IN ELECTRICAL ENGINEERING (Returning Students)	11-Jan-21	15-Mar-21

FACULTY OF ENGINEERING AND THE BUILT ENVIRONMENT

OTHER LEVELS OF STUDYING REGISTRATIONS

BELLVILLE CAMPUS

ONLINE REGISTRATION PROGRAMMES	REGISTRATION DATES	
	ONLINE START	ONLINE END
DEPARTMENT: INDUSTRIAL & SYSTEMS ENGINEERING		
B TECH: QUALITY (NON DEGREE PURPOSES)	04-Feb-21	15-Mar-21
ND: ENGINEERING: INDUSTRIAL (Phased out - Senior Students only)	04-Feb-21	15-Mar-21
DIPLOMA IN INDUSTRIAL ENGINEERING (Senior Students)	04-Feb-21	15-Mar-21
B TECH: ENGINEERING: INDUSTRIAL (Phased out - Senior Students only)	04-Feb-21	15-Mar-21
B TECH: QUALITY (Phased out - Senior Students only)	04-Feb-21	15-Mar-21
ADVANCED DIPLOMA IN INDUSTRIAL ENGINEERING	04-Feb-21	15-Mar-21
ADVANCED DIPLOMA IN QUALITY	04-Feb-21	15-Mar-21
MASTER OF ENGINEERING IN QUALITY (New Students)	11-Jan-21	31-May-21
MASTER OF ENGINEERING IN QUALITY (Returning Students)	11-Jan-21	15-Mar-21
DEPARTMENT: MECHANICAL ENGINEERING		
MECHANICAL ENGINEERING: NON-DIPLOMA & NON-DEGREE	04-Feb-21	15-Mar-21
ND: ENGINEERING: MECHANICAL (Phased out - Senior Students only)	04-Feb-21	15-Mar-21
ND: ENGINEERING : MECHANICAL (MECHATRONICS) (Phased out - Senior Students only)	04-Feb-21	15-Mar-21
ND: ENGINEERING : MECHANICAL (EXTENDED) (Phased out - Senior Students only)	04-Feb-21	15-Mar-21
DIPLOMA IN MECHANICAL ENGINEERING (Senior Students)	04-Feb-21	15-Mar-21
DIPLOMA IN MECHANICAL ENGINEERING (EXTENDED) (Senior Students)	04-Feb-21	15-Mar-21
DIPLOMA IN MECHANICAL ENGINEERING IN MECHATRONICS (Senior Students)	04-Feb-21	15-Mar-21
ADVANCED DIPLOMA IN MECHANICAL ENGINEERING	04-Feb-21	15-Mar-21
ADVANCED DIPLOMA IN MECHANICAL ENGINEERING IN MECHATRONICS	04-Feb-21	15-Mar-21
ADVANCED DIPLOMA IN MECH ENGINEERING IN RENEWABLE ENERGY	04-Feb-21	15-Mar-21

OTHER LEVELS OF STUDYING REGISTRATIONS

BELLVILLE CAMPUS

ONLINE REGISTRATION PROGRAMMES	REGISTRATION DATES	
	ONLINE START	ONLINE END
DEPARTMENT: MECHANICAL ENGINEERING (Cntd.)		
MASTER OF ENGINEERING IN MECHANICAL ENGINEERING (New Students)	11-Jan-21	31-May-21
MASTER OF ENGINEERING IN MECHANICAL ENGINEERING (Returning Students)	11-Jan-21	15-Mar-21
DOCTOR OF ENGINEERING IN MECHANICAL ENGINEERING (New Students)	11-Jan-21	31-May-21
DOCTOR OF ENGINEERING IN MECHANICAL ENGINEERING (Senior Students)	11-Jan-21	15-Mar-21

FIRST-YEAR REGISTRATIONS

REGISTRATION TIME: 09:00 – 15:00 (online assistance)

Note: Due to the COVID-19 pandemic, only off-campus assistance and registrations will be possible.

Students who require off-campus assistance can contact the Call Centre or visit the following link for detailed contact information: <https://www.cput.ac.za/enquiries>

Students who wrote their Final Grade 12 Exams in 2019 (or earlier), and have final acceptance, can register from as early as 1 March 2021 until 12 March 2021.

Final evaluation (screening) of the 2020 NSC results will be conducted from 1–5 March 2021. Any NSC results obtained will be verified against the official results as published by the Department of Basic Education and Training. Acceptance will be confirmed via an automated sms to your cell phone number provided during your application. Also frequently track your acceptance status via the link <http://www.cput.ac.za/study/track>. This site updates status immediately if any changes are made, so gives the latest information.

Please commence with registration immediately after final acceptance.

GRANGER BAY CAMPUS

ONLINE REGISTRATION PROGRAMMES	REGISTRATION DATES	
	ONLINE START	ONLINE END
DEPARTMENT: MARITIME STUDIES		
BACHELOR OF MARINE ENGINEERING (First-years)	01-Mar-21	12-Mar-21
BACHELOR OF MARINE ENGINEERING (EXTENDED) (First-years only)	01-Mar-21	12-Mar-21
BACHELOR OF NAUTICAL SCIENCE (First-years Only)	01-Mar-21	12-Mar-21
BACHELOR OF NAUTICAL SCIENCE (EXTENDED) (First-years Only)	01-Mar-21	12-Mar-21

FACULTY OF ENGINEERING AND THE BUILT ENVIRONMENT

REGISTRATION TIME: 09:00 – 15:00 (online assistance)

Students who require off-campus assistance can contact the Call Centre or visit the following link for detailed contact information: <https://www.cput.ac.za/enquiries>

NOTE: Due to the COVID-19 pandemic, students will only be able to do their registration online; and only off-campus assistance will be possible.

OTHER LEVELS OF STUDYING REGISTRATIONS

GRANGER BAY CAMPUS

ONLINE REGISTRATION PROGRAMMES	REGISTRATION DATES	
	ONLINE START	ONLINE END
DEPARTMENT: MARITIME STUDIES		
MARITIME STUDIES: NON-DIPLOMA	04-Feb-21	15-Mar-21
NON-DIPLOMA: ENGINEERING; MECHANICAL: MARINE ENGINEERING	04-Feb-21	15-Mar-21
ND: ENGINEERING; MECHANICAL: MARINE ENGINEERING (Phased out - Senior Students only)	04-Feb-21	15-Mar-21
ND: MARITIME STUDIES (Phased out - Senior Students only)	04-Feb-21	15-Mar-21
ND: MARITIME STUDIES (EXTENDED) (Phased out - Senior Students only)	04-Feb-21	15-Mar-21
BACHELOR OF MARINE ENGINEERING (Senior Students)	04-Feb-21	15-Mar-21



FACULTY OF HEALTH AND WELLNESS SCIENCES

FIRST-YEAR REGISTRATIONS

REGISTRATION TIME: 09:00 – 15:00 (online assistance)

Note: Due to the COVID-19 pandemic, only off-campus assistance and registrations will be possible.

Students who require off-campus assistance can contact the Call Centre or visit the following link for detailed contact information: <https://www.cput.ac.za/enquiries>

Students who wrote their Final Grade 12 Exams in 2019 (or earlier), and have final acceptance, can register from as early as 1 March 2021 until 12 March 2021.

Final evaluation (screening) of the 2020 NSC results will be conducted from 1–5 March 2021. Any NSC results obtained will be verified against the official results as published by the Department of Basic Education and Training. Acceptance will be confirmed via an automated sms to your cell phone number provided during your application. Also frequently track your acceptance status via the link <http://www.cput.ac.za/study/track>. This site updates status immediately if any changes are made, so gives the latest information.

Please commence with registration immediately after final acceptance.

BELLVILLE CAMPUS (INCL. GROOTE SCHUUR CAMPUS, RADIOGRAPHY)

ONLINE REGISTRATION PROGRAMMES	REGISTRATION DATES	
	ONLINE START	ONLINE END
DEPARTMENT: BIOMEDICAL SCIENCES		
BACHELOR OF HEALTH SCIENCE IN MEDICAL LAB SCIENCE (First-years)	01-Mar-21	12-Mar-21
BACHELOR OF HEALTH SCIENCE IN MEDICAL LAB SCIENCE (EXTENDED) (First-years)	01-Mar-21	12-Mar-21
DEPARTMENT: EMERGENCY MEDICAL SCIENCES		
HIGHER CERTIFICATE IN EMERGENCY MEDICAL CARE (First-years)	01-Mar-21	12-Mar-21
DIPLOMA IN EMERGENCY CARE (First-years)	01-Mar-21	12-Mar-21
BACHELOR OF EMERGENCY MEDICAL CARE (First-years)	01-Mar-21	12-Mar-21
BACHELOR OF EMERGENCY MEDICAL CARE (EXTENDED) (First-years)	01-Mar-21	12-Mar-21
DEPARTMENT: NURSING SCIENCE		
BACHELOR OF NURSING (First-years)	01-Mar-21	12-Mar-21
DEPARTMENT: MEDICAL IMAGING & THERAPEUTIC SCIENCES		
BSC IN DIAGNOSTIC RADIOGRAPHY (First-years)	01-Mar-21	12-Mar-21
BSC IN DIAGNOSTIC ULTRASOUND (First-years)	01-Mar-21	12-Mar-21
BSC IN NUCLEAR MEDICINE TECHNOLOGY (First-years)	01-Mar-21	12-Mar-21
BSC IN RADIATION THERAPY (First-years)	01-Mar-21	12-Mar-21

FACULTY OF HEALTH AND WELLNESS SCIENCES

REGISTRATION TIME: 09:00 – 15:00 (online assistance)

Students who require off-campus assistance can contact the Call Centre or visit the following link for detailed contact information: <https://www.cput.ac.za/enquiries>

NOTE: Due to the COVID-19 pandemic, students will only be able to do their registration online; and only off-campus assistance will be possible.

OTHER LEVELS OF STUDYING REGISTRATIONS

BELLVILLE CAMPUS (INCL. GROOTE SCHUUR CAMPUS, RADIOGRAPHY)

ONLINE REGISTRATION PROGRAMMES	REGISTRATION DATES	
	ONLINE START	ONLINE END
DEPARTMENT: BIOMEDICAL SCIENCES		
BACHELOR OF HEALTH SCIENCE IN MEDICAL LAB SCIENCE (Phased out - Senior Students only)	16-Feb-21	15-Mar-21
BACHELOR OF HEALTH SCIENCE IN MEDICAL LAB SCIENCE (Senior Students)	16-Feb-21	15-Mar-21
BACHELOR OF HEALTH SCIENCE IN MEDICAL LAB SCIENCE (EXTENDED) (Senior Students)	16-Feb-21	15-Mar-21
MASTER OF SCIENCE IN BIOMEDICAL TECHNOLOGY (New Students)	08-Mar-21	31-May-21
MASTER OF SCIENCE IN BIOMEDICAL TECHNOLOGY (Returning Students)	11-Jan-21	15-Mar-21
PHD IN BIOMEDICAL SCIENCE (New Students)	08-Mar-21	31-May-21
PHD IN BIOMEDICAL SCIENCE (Senior Students)	11-Jan-21	15-Mar-21
DEPARTMENT: EMERGENCY MEDICAL SCIENCES		
HIGHER CERTIFICATE IN EMERGENCY MEDICAL CARE (Senior Students)	01-Mar-21	15-Mar-21
DIPLOMA IN EMERGENCY CARE (Senior Students)	01-Mar-21	15-Mar-21
BACHELOR OF EMERGENCY MEDICAL CARE (Senior Students)	01-Mar-21	15-Mar-21
BACHELOR OF EMERGENCY MEDICAL CARE (EXTENDED) (Senior Students)	01-Mar-21	15-Mar-21
MASTER OF EMERGENCY MEDICAL CARE (New Students)	08-Mar-21	31-May-21
MASTER OF EMERGENCY MEDICAL CARE (Returning Students)	11-Jan-21	15-Mar-21

BELLVILLE CAMPUS (INCL. GROOTE SCHUUR CAMPUS, RADIOGRAPHY)

ONLINE REGISTRATION PROGRAMMES	REGISTRATION DATES	
	ONLINE START	ONLINE END
DEPARTMENT: NURSING SCIENCE		
BACHELOR OF NURSING (Senior Students)	01-Mar-21	15-Mar-21
B TECH: NURSING SCIENCE (Phased out - Senior Students only)	01-Mar-21	15-Mar-21
B TECH: NURSING SCIENCE (EXTENDED) (Phased out - Senior Students only)	01-Mar-21	15-Mar-21
B TECH: OCCUPATIONAL HEALTH NURSING (Phased out - Senior Students only)	01-Mar-21	15-Mar-21
B TECH: PRIMARY HEALTH CARE (Phased out - Senior Students only)	01-Mar-21	15-Mar-21
MASTER OF NURSING (New Students)	08-Mar-21	31-May-21
MASTER OF NURSING (Returning Students)	11-Jan-21	15-Mar-21
DEPARTMENT: MEDICAL IMAGING & THERAPEUTIC SCIENCES		
BSC IN DIAGNOSTIC RADIOGRAPHY (Senior Students)	01-Mar-21	15-Mar-21
BSC IN DIAGNOSTIC ULTRASOUND (Senior Students)	01-Mar-21	15-Mar-21
BSC IN NUCLEAR MEDICINE TECHNOLOGY (Senior Students)	01-Mar-21	15-Mar-21
BSC IN RADIATION THERAPY (Senior Students)	01-Mar-21	15-Mar-21
MASTER OF SCIENCE IN RADIOGRAPHY (New Students)	08-Mar-21	31-May-21
MASTER OF SCIENCE IN RADIOGRAPHY (Returning Students)	11-Jan-21	15-Mar-21
DOCTOR OF RADIOGRAPHY (New Students)	08-Mar-21	31-May-21
DOCTOR OF RADIOGRAPHY (Returning Students)	11-Jan-21	15-Mar-21

BELLVILLE CAMPUS (PROGRAMMES NOT FOR ONLINE REGISTRATIONS)

MANUAL REGISTRATION PROGRAMMES (NOT FOR ONLINE REGISTRATION)

****PLEASE FOLLOW THE OFF-CAMPUS MANUAL REGISTRATION PROCESS OUTLINED IN THE REGISTRATION BOOKLET****

DEPARTMENT: HEALTH & WELLNESS SCIENCES: ADMIN

HEALTH AND WELLNESS: NON-DIPLOMA/ DEGREE

DEPARTMENT: BIOMEDICAL SCIENCES

BIOMEDICAL TECHNOLOGY (NON-DEGREE)

BIOMEDICAL SCIENCES (NON-DEGREE)

FACULTY OF HEALTH AND WELLNESS SCIENCES

FIRST-YEAR REGISTRATIONS

REGISTRATION TIME: 09:00 – 15:00 (online assistance)

Note: Due to the COVID-19 pandemic, only off-campus assistance and registrations will be possible.

Students who require off-campus assistance can contact the Call Centre or visit the following link for detailed contact information: <https://www.cput.ac.za/enquiries>

Students who wrote their Final Grade 12 Exams in 2019 (or earlier), and have final acceptance, can register from as early as 1 March 2021 until 12 March 2021.

Final evaluation (screening) of the 2020 NSC results will be conducted from 1–5 March 2021. Any NSC results obtained will be verified against the official results as published by the Department of Basic Education and Training. Acceptance will be confirmed via an automated sms to your cell phone number provided during your application. Also frequently track your acceptance status via the link <http://www.cput.ac.za/study/track>. This site updates status immediately if any changes are made, so gives the latest information.

Please commence with registration immediately after final acceptance.

DISTRICT SIX CAMPUS

ONLINE REGISTRATION PROGRAMMES	REGISTRATION DATES	
	ONLINE START	ONLINE END
DEPARTMENT: OPHTHALMIC SCIENCES		
DIPLOMA IN OPTICIANRY (First-years)	01-Mar-21	12-Mar-21
DEPARTMENT: WELLNESS SCIENCES		
DIPLOMA IN SOMATOLOGY (First-years)	01-Mar-21	12-Mar-21

FACULTY OF HEALTH AND WELLNESS SCIENCES

REGISTRATION TIME: 09:00 – 15:00 (online assistance)

Students who require off-campus assistance can contact the Call Centre or visit the following link for detailed contact information: <https://www.cput.ac.za/enquiries>

NOTE: Due to the COVID-19 pandemic, students will only be able to do their registration online; and only off-campus assistance will be possible.

OTHER LEVELS OF STUDYING REGISTRATIONS

DISTRICT SIX CAMPUS

ONLINE REGISTRATION PROGRAMMES	REGISTRATION DATES	
	ONLINE START	ONLINE END
DEPARTMENT: OPHTHALMIC SCIENCES		
ND: OPTICAL DISPENSING (Phased out - Senior Students only)	01-Mar-21	15-Mar-21
DIPLOMA IN OPTICIANRY (Senior Students)	01-Mar-21	15-Mar-21
DEPARTMENT: WELLNESS SCIENCES		
ND: SOMATOLOGY (Phased out - Senior Students only)	04-Mar-21	22-Mar-21
DIPLOMA IN SOMATOLOGY (Senior Students)	04-Mar-21	22-Mar-21
B TECH: SOMATOLOGY (Phased out - Senior Students only)	04-Mar-21	22-Mar-21
ADVANCED DIPLOMA IN SOMATOLOGY	04-Mar-21	22-Mar-21

DISTRICT SIX CAMPUS

MANUAL REGISTRATION PROGRAMMES (NOT FOR ONLINE REGISTRATION)

****PLEASE FOLLOW THE OFF-CAMPUS MANUAL REGISTRATION PROCESS OUTLINED IN THE REGISTRATION BOOKLET****

DEPARTMENT: HEALTH & WELLNESS SCIENCES: ADMIN

HEALTH AND WELLNESS: NON-DIPLOMA/ DEGREE

FACULTY OF HEALTH AND WELLNESS SCIENCES

FIRST-YEAR REGISTRATIONS

REGISTRATION TIME: 09:00 – 15:00 (online assistance)

Note: Due to the COVID-19 pandemic, only off-campus assistance and registrations will be possible.

Students who require off-campus assistance can contact the Call Centre or visit the following link for detailed contact information: <https://www.cput.ac.za/enquiries>

Students who wrote their Final Grade 12 Exams in 2019 (or earlier), and have final acceptance, can register from as early as 1 March 2021 until 12 March 2021.

Final evaluation (screening) of the 2020 NSC results will be conducted from 1–5 March 2021. Any NSC results obtained will be verified against the official results as published by the Department of Basic Education and Training. Acceptance will be confirmed via an automated sms to your cell phone number provided during your application. Also frequently track your acceptance status via the link <http://www.cput.ac.za/study/track>. This site updates status immediately if any changes are made, so gives the latest information.

Please commence with registration immediately after final acceptance.

TYGERBERG WCRC (DENTAL SERVICES)

ONLINE REGISTRATION PROGRAMMES

REGISTRATION DATES

	REGISTRATION DATES	
	ONLINE START	ONLINE END
DEPARTMENT: DENTAL SCIENCES		
HIGHER CERTIFICATE IN DENTAL ASSISTING (First-years)	01-Mar-21	12-Mar-21

FACULTY OF HEALTH AND WELLNESS SCIENCES

REGISTRATION TIME: 09:00 – 15:00 (online assistance)

Students who require off-campus assistance can contact the Call Centre or visit the following link for detailed contact information: <https://www.cput.ac.za/enquiries>

NOTE: Due to the COVID-19 pandemic, students will only be able to do their registration online; and only off-campus assistance will be possible.

OTHER LEVELS OF STUDYING REGISTRATIONS

TYGERBERG WCRC (DENTAL SERVICES)

ONLINE REGISTRATION PROGRAMMES	REGISTRATION DATES	
	ONLINE START	ONLINE END
DEPARTMENT: DENTAL SCIENCES		
HIGHER CERTIFICATE IN DENTAL ASSISTING (Senior Students)	01-Mar-21	15-Mar-21
ND: DENTAL TECHNOLOGY (Phased out - Senior Students only)	01-Mar-21	15-Mar-21
ND: DENTAL TECHNOLOGY (EXTENDED) (Phased out - Senior Students only)	01-Mar-21	15-Mar-21
B TECH: DENTAL TECHNOLOGY (Phased out - Senior Students only)	01-Mar-21	15-Mar-21
MHSc IN DENTAL TECHNOLOGY (New Students)	08-Mar-21	31-May-21
MHSc IN DENTAL TECHNOLOGY (Returning Students)	11-Jan-21	15-Mar-21

OTHER LEVELS OF STUDYING REGISTRATIONS

ATHLONE CAMPUS

ONLINE REGISTRATION PROGRAMMES	REGISTRATION DATES	
	ONLINE START	ONLINE END
DEPARTMENT: NURSING SCIENCE		
B TECH: NURSING SCIENCE (Phased out - Senior Students only)	01-Mar-21	15-Mar-21
B TECH: NURSING SCIENCE (EXTENDED) (Phased out - Senior Students only)	01-Mar-21	15-Mar-21

FACULTY OF INFORMATICS AND DESIGN

FIRST-YEAR REGISTRATIONS

REGISTRATION TIME: 09:00 – 15:00 (online assistance)

Note: Due to the COVID-19 pandemic, only off-campus assistance and registrations will be possible.

Students who require off-campus assistance can contact the Call Centre or visit the following link for detailed contact information: <https://www.cput.ac.za/enquiries>

Students who wrote their Final Grade 12 Exams in 2019 (or earlier), and have final acceptance, can register from as early as 1 March 2021 until 12 March 2021.

Final evaluation (screening) of the 2020 NSC results will be conducted from 1–5 March 2021. Any NSC results obtained will be verified against the official results as published by the Department of Basic Education and Training. Acceptance will be confirmed via an automated sms to your cell phone number provided during your application. Also frequently track your acceptance status via the link <http://www.cput.ac.za/study/track>. This site updates status immediately if any changes are made, so gives the latest information.

Please commence with registration immediately after final acceptance.

DISTRICT SIX CAMPUS (INCLUDING TVET COLLEGES)

ONLINE REGISTRATION PROGRAMMES	REGISTRATION DATES	
	ONLINE START	ONLINE END
DEPARTMENT OF ARCHITECTURAL TECHNOLOGY & INTERIOR DESIGN: ARCHITECTURAL TECHNOLOGY		
DIPLOMA IN ARCHITECTURAL TECHNOLOGY (First-years)	01-Mar-21	12-Mar-21
DIPLOMA IN ARCHITECTURAL TECHNOLOGY (EXTENDED) (First-years)	01-Mar-21	12-Mar-21
DEPARTMENT OF APPLIED DESIGN: FASHION & SURFACE DESIGN		
DIPLOMA IN FASHION (First-years)	01-Mar-21	12-Mar-21
DIPLOMA IN FASHION (EXTENDED) (First-years)	01-Mar-21	12-Mar-21
MEDIA DEPARTMENT: FILM PRODUCTION		
DIPLOMA IN FILM PRODUCTION (First-years)	01-Mar-21	12-Mar-21
DEPARTMENT OF APPLIED DESIGN: VISUAL COMMUNICATION DESIGN		
DIPLOMA IN VISUAL COMMUNICATION DESIGN (First-years)	01-Mar-21	12-Mar-21
DIPLOMA IN VISUAL COMMUNICATION DESIGN (EXTENDED) (First-years)	01-Mar-21	12-Mar-21
DEPARTMENT OF APPLIED DESIGN: PRODUCT DESIGN		
DIPLOMA IN PRODUCT DESIGN (First-years)	01-Mar-21	12-Mar-21
DIPLOMA IN PRODUCT DESIGN (EXTENDED) (First-years)	01-Mar-21	12-Mar-21

FIRST-YEAR REGISTRATIONS

DISTRICT SIX CAMPUS (INCLUDING TVET COLLEGES)

ONLINE REGISTRATION PROGRAMMES	REGISTRATION DATES	
	ONLINE START	ONLINE END
DEPARTMENT OF INFORMATION TECHNOLOGY		
HIGHER CERTIFICATE: INFO AND COMMUNICATION TECHNOLOGY* Crawford Campus (First-years)	01-Mar-21	12-Mar-21
HIGHER CERTIFICATE: INFO AND COMMUNICATION TECHNOLOGY* Fish Hoek Campus (First-years)	01-Mar-21	12-Mar-21
HIGHER CERTIFICATE: INFO AND COMMUNICATION TECHNOLOGY* Khayelitsha Campus (First-years)	01-Mar-21	12-Mar-21
HIGHER CERTIFICATE: INFO AND COMMUNICATION TECHNOLOGY* Tygerberg Campus (First-years)	01-Mar-21	12-Mar-21
DIPLOMA IN ICT IN APPLICATIONS DEVELOPMENT (First-years)	01-Mar-21	12-Mar-21
DEPARTMENT OF ARCHITECTURAL TECHNOLOGY & INTERIOR DESIGN: INTERIOR DESIGN		
DIPLOMA IN INTERIOR DESIGN (First-years)	01-Mar-21	12-Mar-21
DIPLOMA IN INTERIOR DESIGN (EXTENDED) (First-years)	01-Mar-21	12-Mar-21
DEPARTMENT OF APPLIED DESIGN: JEWELLERY DESIGN & MANUFACTURE		
DIPLOMA IN JEWELLERY DESIGN AND MANUFACTURE (First-years)	01-Mar-21	12-Mar-21
DIPLOMA IN JEWELLERY DESIGN & MANUFACTURE (EXTENDED) (First-years)	01-Mar-21	12-Mar-21
MEDIA DEPARTMENT: JOURNALISM		
DIPLOMA IN JOURNALISM (First-years)	01-Mar-21	12-Mar-21
MEDIA DEPARTMENT: PHOTOGRAPHY		
DIPLOMA IN PHOTOGRAPHY (First-years)	01-Mar-21	12-Mar-21
DEPARTMENT OF TOWN & REGIONAL PLANNING		
DIPLOMA IN URBAN AND REGIONAL PLANNING (First-years)	01-Mar-21	12-Mar-21
MEDIA DEPARTMENT: PUBLIC RELATIONS & COMMUNICATION		
DIPLOMA IN PUBLIC RELATIONS AND COMMUNICATION (First-years)	01-Mar-21	12-Mar-21

FACULTY OF INFORMATICS AND DESIGN

REGISTRATION TIME: 09:00 – 15:00 (online assistance)

Students who require off-campus assistance can contact the Call Centre or visit the following link for detailed contact information: <https://www.cput.ac.za/enquiries>

NOTE: Due to the COVID-19 pandemic, students will only be able to do their registration online; and only off-campus assistance will be possible.

OTHER LEVELS OF STUDYING REGISTRATIONS**DISTRICT SIX CAMPUS (INCLUDING TVET COLLEGES)**

ONLINE REGISTRATION PROGRAMMES	REGISTRATION DATES	
	ONLINE START	ONLINE END
DEPARTMENT OF ARCHITECTURAL TECHNOLOGY & INTERIOR DESIGN: ARCHITECTURAL TECHNOLOGY		
ND: ARCHITECTURAL TECHNOLOGY (Phased out - Senior Students only)	18-Jan-21	05-Feb-21
ND: ARCHITECTURAL TECHNOLOGY (EXTENDED) (Phased out - Senior Students only)	18-Jan-21	05-Feb-21
DIPLOMA IN ARCHITECTURAL TECHNOLOGY (Senior Students)	18-Jan-21	05-Feb-21
DIPLOMA IN ARCHITECTURAL TECHNOLOGY (EXTENDED (Senior Students)	18-Jan-21	05-Feb-21
B TECH: ARCHITECTURAL TECHNOLOGY (Phased out - Senior Students only)	18-Jan-21	05-Feb-21
ADVANCED DIPLOMA IN ARCHITECTURAL TECHNOLOGY	18-Jan-21	05-Feb-21
M TECH: ARCHITECTURAL TECHNOLOGY (Phased out - Senior Students only)	18-Jan-21	15-Mar-21
DEPARTMENT OF APPLIED DESIGN: FASHION & SURFACE DESIGN		
ND: FASHION (Phased out - Senior Students only)	18-Jan-21	05-Feb-21
ND: FASHION (EXTENDED) (Phased out - Senior Students only)	18-Jan-21	05-Feb-21
ND: SURFACE DESIGN (Phased out - Senior Students only)	18-Jan-21	05-Feb-21
ND: SURFACE DESIGN (EXTENDED) (Phased out - Senior Students only)	18-Jan-21	05-Feb-21
DIPLOMA IN FASHION (Senior Students)	18-Jan-21	05-Feb-21
DIPLOMA IN FASHION (EXTENDED) (Senior Students)	18-Jan-21	05-Feb-21
B TECH: FASHION (Phased out - Senior Students only)	18-Jan-21	05-Feb-21
B TECH: SURFACE DESIGN (Phased out - Senior Students only)	18-Jan-21	05-Feb-21
ADVANCED DIPLOMA IN FASHION	01-Mar-21	05-Mar-21

OTHER LEVELS OF STUDYING REGISTRATIONS

DISTRICT SIX CAMPUS (INCLUDING TVET COLLEGES)

ONLINE REGISTRATION PROGRAMMES	REGISTRATION DATES	
	ONLINE START	ONLINE END
MEDIA DEPARTMENT: FILM PRODUCTION		
ND: FILM AND VIDEO TECHNOLOGY (Phased out - Senior Students only)	18-Jan-21	05-Feb-21
DIPLOMA IN FILM PRODUCTION (Senior Students)	18-Jan-21	05-Feb-21
ADVANCED DIPLOMA IN FILM PRODUCTION	18-Jan-21	05-Feb-21
DEPARTMENT OF APPLIED DESIGN: VISUAL COMMUNICATION DESIGN		
ND: GRAPHIC DESIGN (Phased out - Senior Students only)	18-Jan-21	05-Feb-21
ND: GRAPHIC DESIGN (EXTENDED) (Phased out - Senior Students only)	18-Jan-21	05-Feb-21
DIPLOMA IN VISUAL COMMUNICATION DESIGN (Senior Students)	18-Jan-21	05-Feb-21
DIPLOMA IN VISUAL COMMUNICATION DESIGN (EXTENDED) (Senior Students)	18-Jan-21	05-Feb-21
ADVANCED DIPLOMA IN VISUAL COMMUNICATION DESIGN	01-Mar-21	05-Mar-21
B TECH: GRAPHIC DESIGN (Phased out - Senior Students only)	18-Jan-21	05-Feb-21
M TECH: GRAPHIC DESIGN (Phased out - Senior Students only)	18-Jan-21	15-Mar-21
D TECH: GRAPHIC DESIGN (Phased out - Senior Students only)	18-Jan-21	15-Mar-21
DEPARTMENT OF APPLIED DESIGN: PRODUCT DESIGN		
ND: THREE-DIMENSIONAL DESIGN (Phased out - Senior Students only)	18-Jan-21	05-Feb-21
ND: THREE-DIMENSIONAL DESIGN (EXTENDED) (Phased out - Senior Students only)	18-Jan-21	05-Feb-21
DIPLOMA IN PRODUCT DESIGN (Senior Students)	18-Jan-21	05-Feb-21
DIPLOMA IN PRODUCT DESIGN (EXTENDED) (Senior Students)	18-Jan-21	05-Feb-21
B TECH: INDUSTRIAL DESIGN (Phased out - Senior Students only)	18-Jan-21	05-Feb-21
ADVANCED DIPLOMA IN INDUSTRIAL DESIGN	01-Mar-21	05-Mar-21
M TECH: DESIGN (Phased out - Senior Students only)	18-Jan-21	15-Mar-21
M TECH: INDUSTRIAL DESIGN (Phased out - Senior Students only)	18-Jan-21	15-Mar-21
D TECH: DESIGN (Phased out - Senior Students only)	18-Jan-21	15-Mar-21
DOCTOR OF APPLIED ARTS IN DESIGN (New Students)	18-Jan-21	31-May-21
DOCTOR OF APPLIED ARTS IN DESIGN (Returning Students)	18-Jan-21	15-Mar-21

FACULTY OF INFORMATICS AND DESIGN

OTHER LEVELS OF STUDYING REGISTRATIONS

DISTRICT SIX CAMPUS (INCLUDING TVET COLLEGES)

ONLINE REGISTRATION PROGRAMMES	REGISTRATION DATES	
	ONLINE START	ONLINE END
DEPARTMENT OF INFORMATION TECHNOLOGY		
DIPLOMA IN ICT IN APPLICATIONS DEVELOPMENT (Senior Students)	18-Jan-21	05-Feb-21
DIPLOMA IN ICT IN COMMUNICATION NETWORKS (Senior Students)	18-Jan-21	05-Feb-21
DIPLOMA IN ICT IN MULTIMEDIA APPLICATIONS (Senior Students)	18-Jan-21	05-Feb-21
B TECH: MULTIMEDIA (Phased out - Senior Students only)	18-Jan-21	05-Feb-21
B TECH: INFORMATION TECHNOLOGY: COMMUNICATION NETWORK (Phased out - Senior Students only)	18-Jan-21	05-Feb-21
B TECH: INFORMATION TECHNOLOGY: SOFTWARE DEVELOPMENT (Phased out - Senior Students only)	18-Jan-21	05-Feb-21
B TECH: INFORMATION TECHNOLOGY: INFORMATION AND TECHNOLOGY MANAGEMENT (Phased out - Senior Students only)	18-Jan-21	05-Feb-21
ADVANCED DIPLOMA IN ICT IN APPLICATIONS DEVELOPMENT	18-Jan-21	05-Feb-21
ADVANCED DIPLOMA IN ICT IN COMMUNICATION NETWORKS	18-Jan-21	05-Feb-21
ADVANCED DIPLOMA IN ICT IN MULTIMEDIA APPLICATIONS	18-Jan-21	05-Feb-21
M TECH: INFORMATION TECHNOLOGY (Phased out - Senior Students only)	18-Jan-21	15-Mar-21
MASTER OF ICT (Course Based) (New Students)	18-Jan-21	05-Feb-21
MASTER OF ICT (Course Based) (Returning Students)	18-Jan-21	05-Feb-21
D TECH: INFORMATION TECHNOLOGY (Phased out - Senior Students only)	18-Jan-21	15-Mar-21
D TECH: INFORMATICS (Phased out - Senior Students only)	18-Jan-21	15-Mar-21
DOCTOR OF PHILOSOPHY IN INFORMATICS (New Students)	18-Jan-21	31-May-21
DOCTOR OF PHILOSOPHY IN INFORMATICS (Returning Students)	18-Jan-21	15-Mar-21
DOCTOR OF ICT (New Students)	18-Jan-21	31-May-21
DOCTOR OF ICT (Returning Students)	18-Jan-21	15-Mar-21

OTHER LEVELS OF STUDYING REGISTRATIONS

DISTRICT SIX CAMPUS (INCLUDING TVET COLLEGES)

ONLINE REGISTRATION PROGRAMMES	REGISTRATION DATES	
	ONLINE START	ONLINE END
DEPARTMENT OF ARCHITECTURAL TECHNOLOGY & INTERIOR DESIGN: INTERIOR DESIGN		
ND: INTERIOR DESIGN (Phased out - Senior Students only)	18-Jan-21	05-Feb-21
ND: INTERIOR DESIGN (EXTENDED) (Phased out - Senior Students only)	18-Jan-21	05-Feb-21
DIPLOMA IN INTERIOR DESIGN (Senior Students)	18-Jan-21	05-Feb-21
DIPLOMA IN INTERIOR DESIGN (EXTENDED) (Senior Students)	18-Jan-21	05-Feb-21
B TECH: INTERIOR DESIGN (Phased out - Senior Students only)	18-Jan-21	05-Feb-21
ADVANCED DIPLOMA IN INTERIOR DESIGN	01-Mar-21	05-Mar-21
M TECH: INTERIOR DESIGN (Phased out - Senior Students only)	18-Jan-21	15-Mar-21
DEPARTMENT OF APPLIED DESIGN: JEWELLERY DESIGN & MANUFACTURE		
ND: JEWELLERY DESIGN & MANUFACTURE (Phased out - Senior Students only)	18-Jan-21	05-Feb-21
ND: JEWELLERY DESIGN & MANUFACTURE (EXTENDED) (Phased out - Senior Students only)	18-Jan-21	05-Feb-21
DIPLOMA IN JEWELLERY DESIGN & MANUFACTURE (Senior Students)	18-Jan-21	05-Feb-21
DIPLOMA IN JEWELLERY DESIGN & MANUFACTURE (EXTENDED) (Senior Students)	18-Jan-21	05-Feb-21
B TECH: JEWELLERY DESIGN & MANUFACTURE (Phased out - Senior Students only)	18-Jan-21	05-Feb-21
MEDIA DEPARTMENT: JOURNALISM		
ND: JOURNALISM (Phased out - Senior Students only)	18-Jan-21	05-Feb-21
DIPLOMA IN JOURNALISM (Senior Students)	18-Jan-21	05-Feb-21
B TECH: JOURNALISM (Phased out - Senior Students only)	18-Jan-21	05-Feb-21
ADVANCED DIPLOMA IN JOURNALISM	18-Jan-21	05-Feb-21
MEDIA DEPARTMENT: PHOTOGRAPHY		
ND: PHOTOGRAPHY (Phased out - Senior Students only)	18-Jan-21	05-Feb-21
DIPLOMA IN PHOTOGRAPHY (Senior Students)	18-Jan-21	05-Feb-21
B TECH: PHOTOGRAPHY (Phased out - Senior Students only)	18-Jan-21	05-Feb-21
ADVANCED DIPLOMA IN PHOTOGRAPHY	18-Jan-21	05-Feb-21

FACULTY OF INFORMATICS AND DESIGN

OTHER LEVELS OF STUDYING REGISTRATIONS

DISTRICT SIX CAMPUS (INCLUDING TVET COLLEGES)

ONLINE REGISTRATION PROGRAMMES	REGISTRATION DATES	
	ONLINE START	ONLINE END
DEPARTMENT OF TOWN & REGIONAL PLANNING		
ND: TOWN AND REGIONAL PLANNING (Phased out - Senior Students only)	18-Jan-21	05-Feb-21
DIPLOMA IN URBAN AND REGIONAL PLANNING (Senior Students)	18-Jan-21	05-Feb-21
B TECH: TOWN AND REGIONAL PLANNING (Phased out - Senior Students only)	18-Jan-21	05-Feb-21
ADVANCED DIPLOMA IN URBAN AND REGIONAL PLANNING	18-Jan-21	05-Feb-21
M TECH: TOWN AND REGIONAL PLANNING (Phased out - Senior Students only)	18-Jan-21	15-Mar-21
MASTER OF URBAN AND REGIONAL PLANNING (COURSE BASED) (New Students)	18-Jan-21	05-Feb-21
MASTER OF URBAN AND REGIONAL PLANNING (COURSE BASED) (Returning Students)	18-Jan-21	05-Feb-21
MEDIA DEPARTMENT: PUBLIC RELATIONS & COMMUNICATION		
ND: PUBLIC RELATIONS MANAGEMENT (Phased out - Senior Students only)	18-Jan-21	05-Feb-21
DIPLOMA IN PUBLIC RELATIONS AND COMMUNICATION (Senior Students)	18-Jan-21	05-Feb-21
B TECH: PUBLIC RELATIONS MANAGEMENT (Phased out - Senior Students only)	18-Jan-21	05-Feb-21
ADVANCED DIPLOMA IN PUBLIC RELATIONS AND COMMUNICATION	18-Jan-21	05-Feb-21
M TECH: PUBLIC RELATIONS MANAGEMENT (COURSE BASED) (Phased out - Senior Students only)	18-Jan-21	15-Feb-21
M TECH: PUBLIC RELATIONS MANAGEMENT (Phased out - Senior Students only)	18-Jan-21	15-Mar-21
MASTER OF PUBLIC RELATIONS AND COMMUNICATION MANAGEMENT (COURSE BASED) (New Students)	18-Jan-21	15-Feb-21
MASTER OF PUBLIC RELATIONS AND COMMUNICATION MANAGEMENT (COURSE BASED) (Returning Students)	18-Jan-21	15-Feb-21

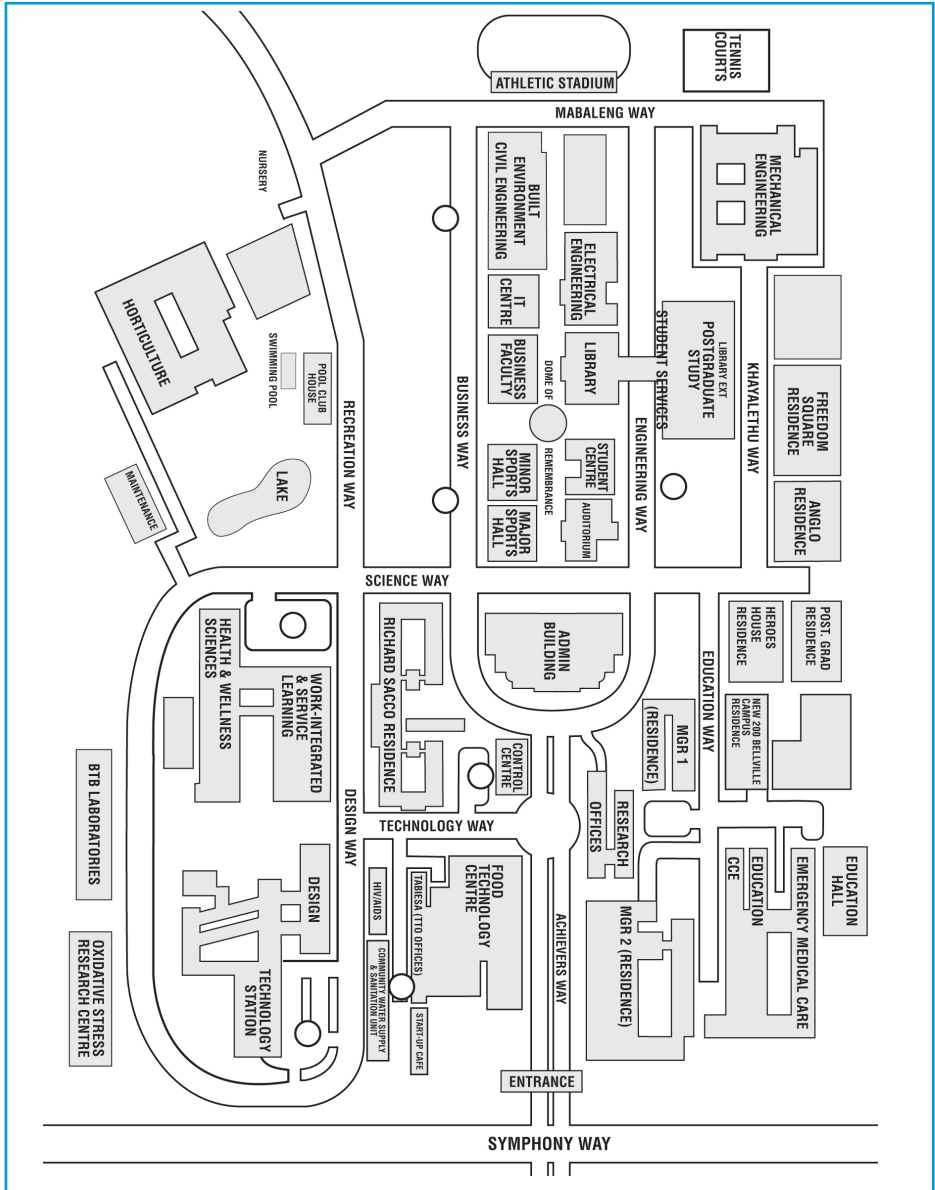
Do

- ✓ Thoroughly check your proof of registration to ensure that you are registered for the correct subjects, qualification and the correct year.
- ✓ Make sure that credits obtained in other post-school institutions have been submitted to the Faculty Office for processing.
- ✓ After registration, regularly check that your name appears on the class list.
- ✓ Submit any amendments (additions or cancellations) before the last day of registration.
- ✓ Check that all subjects or credits obtained in previous years appear on your registration form.

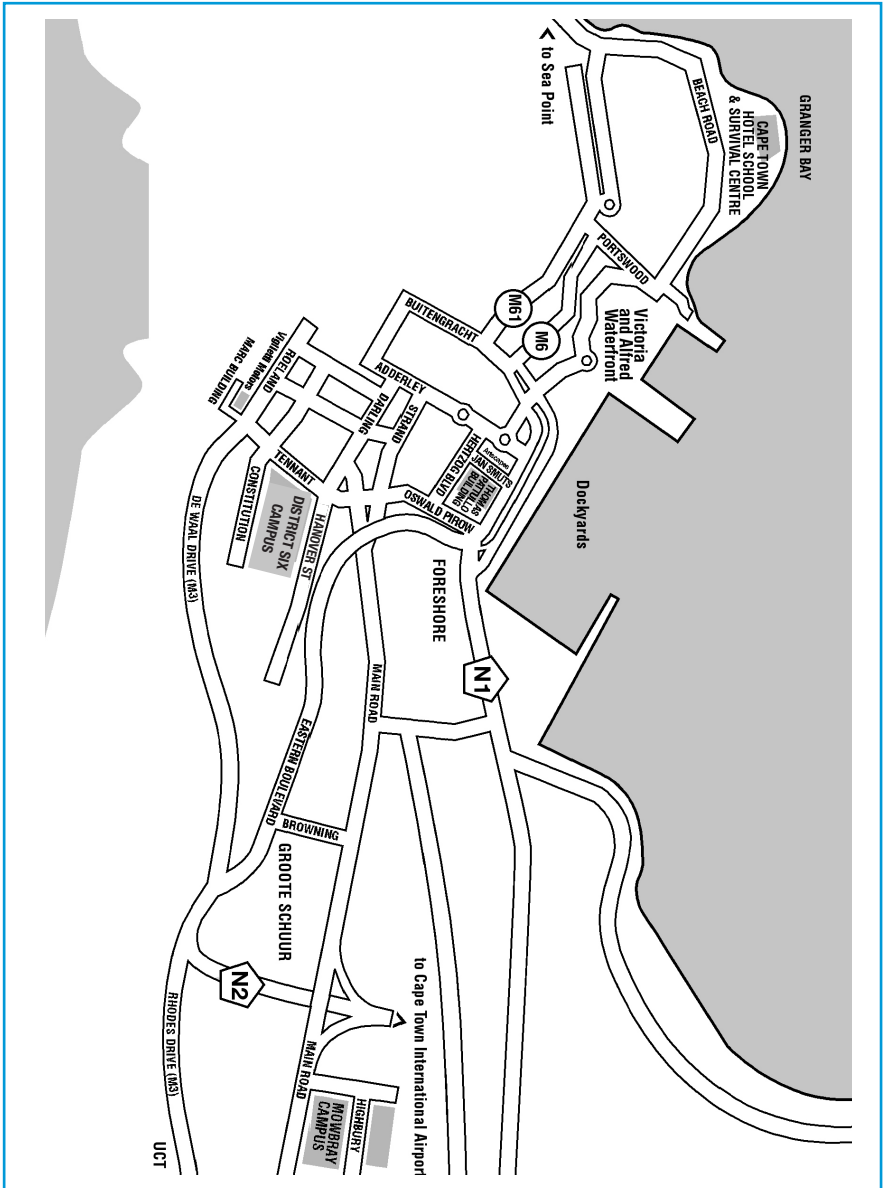
Do NOT

- ✗ Submit fraudulent information or certificates.
- ✗ Pay money to anyone except the cashiers.
- ✗ Attend classes if you are not registered, *except with written permission from the Dean (which will lapse the day after late registration)*.
- ✗ Register for more than one qualification without the permission of Senate.
- ✗ Register for subjects that clash.
- ✗ After the last day of registration, participate in any academic activities if not officially registered.

BELLVILLE CAMPUS MAP



DISTRICT SIX/ GRANGER BAY/ MOWBRAY CAMPUSES



STEER YOUR CAREER IN THE RIGHT DIRECTION.

Apply for a postgraduate
qualification at CPUT.



IF
not
NOW, WHEN?

+27 21 959 6767
info@cput.ac.za
www.cput.ac.za

www.facebook.com/cput.ac.za
@cput
@wearecput


Cape Peninsula
University of Technology
creating futures

**#weare
CPUT**
creating futures

-  www.cput.ac.za
-  +27 21 959 6767
-  info@cput.ac.za
-  @CPUT
-  @wearecput
-  www.facebook.com/cput.ac.za

creating futures



Cape Peninsula
University of Technology